

The Impact of a Permanent Income Shock on the Situation of
Women in the Household:
the case of a pension reform in Argentina¹

Inés Berniell
CEMFI

Dolores de la Mata
Universidad del Rosario

Matilde P. Machado
Universidad Carlos III de Madrid
and CEPR

October 14, 2013

¹Acknowledgments: We acknowledge the support of grant ECO-2010-20504 from Ministerio de Economía y Competitividad Grant (Matilde P. Machado). We thank Manuel Bagüés for valuable insights. We would also to thank Manuel Arellano, Samuel Bentolila, Julio Cáceres, Guillermo Caruana, Laura Crespo, Libertad González, Mónica Martínez-Bravo, Pedro Mira, Diego Puga, Pedro Rey y Luciano Villacorta, for suggestions and comments and the audiences of COSME gender workshop 2013, Universidad del Rosario, Banco de la República (Colombia) and Universidad Icesi. Carlos Salamanca provided excellent research assistance in the collection of media data for Argentina.

Abstract

Transfers to women may affect their bargaining power within the household and consequently their well-being. We analyze the effects of the 2004/2005 pension reform in Argentina, that resulted in an unexpected and substantial increase in permanent income for around 2 million women, on outcomes arguably related to women's bargaining power within the household. We estimate the effects of the reform in the probability of divorce/separation, the distribution of household chores, and the probability of women being the head of the household, using a Difference-in-Differences approach. Our results show that despite the low divorce probability among seniors, transfers to senior women have substantial effects on their situation in the household. More specifically, we find that the reform had statistically significant effects on the probability of divorce/separation increasing it by 1.8 – 2.7 percentage points implying an increase of around 18 – 19% on the divorce/separation rate of 60 – 65 year old women. Moreover, the probability of being the head of the household also increased by 2.8 – 3.3 percentage points representing an increase of 7 – 19% in the probability amongst women of 60 – 65 years of age. In the case of married women, the probability of being the head of the household increased by 1.3 – 1.5 percentage points, which represents an increase of 20 – 22%. Results suggest that the distribution of household chores within the couples was also affected by the reform. More precisely, the probability that the wife is the only person in charge of the housework decreased by 5 percentage points, an 11% decrease. The participation of husbands in housework, however, does not change significantly.

Keywords: household bargaining power, marital disruption, divorce, non-contributory pensions, pensions, public transfers, intra-household decision allocation, household chores, collective models

JEL Classification: J12, J16, J26, H55

1 Introduction

Over the past two decades, several countries particularly in Latin America introduced social programs to fight poverty and inequality. Amongst the most expensive programs are “non-contributory pensions” which aim to extend pension coverage to individuals who failed to contribute to Social Security (Levy and Schady, 2013). Latin American women are particularly affected by these programs due to their low attachment to the labor market. In this paper, we exploit the non-contributory pension reform that occurred in Argentina in 2004/2005 as a source of a permanent income shock on outcomes arguably related to women’s bargaining power within the household.¹ The unexpected increase in the income of eligible individuals —mostly women— brought about by the reform makes it an ideal setting to analyze exogenous asymmetric income effects within the household. Specifically, we estimate the effects of the reform in the probability of divorce/separation, the probability of women being the head of the household, and the distribution of household chores by differences-in-differences for senior women. Our results show that transfers to senior women have substantial effects on their situation in the household despite their low probability of divorce and perceived stable lives.

The Argentinean pension reform (Law 25994, art. 6 and Decree 1454/05) also known as the “moratorium” or “housewives reform” was totally unexpected; the Government discussed and passed the first law in December 16, 2004 and the Decree in December 2005, although evidence shows that it is not until the beginning of 2007 that they were implemented. The reform allowed individuals who had reached the retirement age but did not fulfill the 30-year social security contribution requirement to retire and benefit from a pension. The objective of the reform was to increase pension coverage in Argentina which was particularly low for women (55% in 2004) mainly due to their low participation in the labor market (around 44% in the 80s, ILO 2011) and a high proportion of informal jobs.² The percentage of pension beneficiaries among elderly women in Argentina went from 57% in 2005 to 92% in 2009 (Benigni, Lieutier, and Ludmer 2012). Overall, the reform benefitted more than 2 million women.³ This meant a substantial decrease in the probability that women in their mid 60s

¹There is some discussion about whether the pensions approved by the Argentinean reform should be considered non-contributory. We follow Berniell 2012, Lustig and Pessino 2013, and Levy and Schady 2013 and label them as non-contributory pensions.

²Tornarolli and Conconi 2007 report a 45% level of informality for all workers but the value for females is likely to be higher (ILO 2011)

³Own calculation using data from the National Social Security Administration (ANSES) and D’Elia, Calabria,

had zero income, which went in urban areas from around 35% before the reform to 10% after the reform (see Figure 1). Hence, an individual in 2007 who never contributed to social security would be entitled to receive at least 51% of the minimum pension (304 ARS in 2007 or 191 dollars PPP 2009) each month during the first 5 years and 596 ARS or 374 dollars PPP 2009 afterwards.⁴

Our data comes from the Argentine Continuous Permanent Household Survey (or EPH from the Spanish acronym for *Encuesta Permanente de Hogares Continua*) for the years 2004 – 2009. We restrict our sample to women and estimate the effect of the reform on three outcomes by differences-in-differences. We use as part of our identification strategy a characteristic of the reform which ascribed all cohorts born before 1945 the right to benefit from a pension by the time they turned 60 without ever having contributed to the social security (SS hereafter). Accordingly, we define as *treated* all those born between 1941 – 1944 and as *control* all those born between 1950 – 1953 and compare the evolution of these groups in the pre and post reform periods. All women in the treatment group already turned 60 in the pre-treatment period and are potentially eligible to obtain the maximum benefit of the reform (get a pension without any SS contribution). Women in the control group are younger than 60 during the entire period under study and, therefore, are never affected by the reform (more details in Section 4).

Importantly, we can neither identify individuals that receive a pension due to the reform nor the number of years of past contribution to the social security. Because of these data restrictions, our estimates identify *intention to treat* effects rather than treatment effects. We believe, however, that intention to treat effects are more policy relevant parameters than treatment effects since they incorporate endogenous decisions by the population to benefit or not from the reforms. Moreover, were we to observe individual past SS contributions or actual benefit claims, we would need to instrument for these variables as they would be highly endogenous. A suitable instrument would be hard to find.

A priori, our setting is one where the impact of a pension reform on divorce/separation is likely to be small or close to zero. First, because Argentina is a predominantly catholic country where divorce has only been legal since 1987. Second, because our pension beneficiaries, all older than 60, are likely to have been married for a long time. As Becker, Landes, and Michael 1977, and Weiss

Calero, Gaiada, and Rottenschweiler 2011.

⁴The amount of the pension increases in the number of past contributions to the SS.

1997 show, religion, old age and marriage duration are factors that decrease the divorce/separation probability.⁵ This probability is likely to be artificially low in Argentina, nevertheless, due to the large number of 60-year-old women without any source of income (around 39% in 2004). In that sense, even relatively small transfers such as the ones granted with the pension reform may represent a huge increase in personal income and with it the opportunity to divorce or separate from a spouse or a partner.

Our results show that the pension reform significantly impacted women's income and their situation in the household. First, women's probability of receiving a pension increased by 43 – 53 percentage points, which meant a decrease in the probability of having zero income of 27 – 36 percentage points and an average increase in income of 61-73 dollars (PPP 2009). More interesting for our purposes is the even higher income effects obtained in the sample of married women, meaning a 50 – 55% increase in the wife's share in the household and the couple's income.⁶ These large income effects were accompanied by an increase in the divorce/separation probability as well as an increase in the outcomes related to the bargaining power within the household: i.e. an increase in the probability of women being the head of the household and a decrease in the wives' participation in household chores. More concretely, the probability of divorce or separation increases by 1.8 – 2.7 percentage points after the reform which represents an increase in divorce/separation rates of roughly 18 – 19% for women between 60 – 65 years old. This relatively large impact is likely to reflect a large backlog of women who despite wanting a divorce/separation could not afford it. Our large estimates may encompass a short-lived effect comparable to the effects of divorce laws adopted in several countries González and Viitanen 2009. The probability of women being the head of the household increases between 2.8 – 3.3 percentage points which represents an increase of around 7 – 19% for women between 60 – 65 years old. Since this large effect may simply be a consequence of an increase in the number of divorcees/separated in our treatment group, we reestimated our model in the subsample of married women. In the case of married women, the probability of being the head of the household increased by 1.3 – 1.5 percentage points, which represents an increase of 20.3 – 22.0%. Finally, the probability that the wife is the only person in charged of the housework decreased by 5 percentage points, a 11% decrease, while the participation of husbands in housework

⁵Bobonis 2011 for example finds that Conditional Cash programs increase union dissolution in rural Mexico for all women except those who are older than 35 years old. Note that his sample does not include women who are older than 56.

⁶We denote as married both legally married and those living with a partner.

does not change significantly.

We extend our model in two ways. First, we allow the reform to have different effects by educational levels. We find an interesting pattern: while the average income effects are lower on average for women with high education, we find that these women tended to opt-out of their marriages by increasing their probability of divorce/separation, while the low-educated opted-in and gained more bargaining power within their marriages. Second, we present an analysis of the very short run effects (18 months) of the reform exploiting the panel dimension of the EPH survey. The results indicate that even though there are effects in income in the very short run, divorce probabilities and bargaining power do not change over such a short horizon. When restricting to the sample of married women we do not observe any short-run effects on the bargaining power of women in the household. These results do not invalidate our main results either. There are several possible explanations for why we do not observe effects in the very short run. First, the income effect in the 18 months after the reform is much lower than over a larger horizon. Citizens, particularly seniors, may have difficulty accessing benefits even though they are entitled to them. Second, it is possible that women need to accumulate a certain amount of income before they can separate from their partners; Third, it is likely that women may try to bargain a better position before deciding on divorce/separation.

Finally, we present robustness checks where we show evidence that our results are not driven by systematic differences between the control and the treatment group other than the different evolution in their income due to the reform.

This paper contributes to two very extensive literatures. On the one hand, the literature on decision and allocation within the household and on the other hand, the literature on the determinants of divorce/separation. The literature on decision and allocation within the household, initiated with the work of Becker (Becker 1974), has evolved dramatically to establish that most economic decisions taken within the household depend on incomes (earned and unearned), prices, opportunity costs and preferences of both partners and are, therefore, inconsistent with the traditional “unitary” view of a unique utility maximization entity with income pooling (Manser and Brown 1980, McElroy and Horney 1981, McElroy 1990, Thomas 1990, Schultz 1990, Lundberg and Pollak 1993, Bourguignon, Browning, Chiappori, and Lechene 1993, Lundberg and Pollak 1996, Lundberg, Pollak, and Wales 1997, Gray 1998, Browning and Chiappori 1998, Chiappori 1988, Browning, Chiappori, and Weiss

2011, among others).⁷ Alternative models of allocation within the household and the accompanying empirical evidence predict an increase in outcomes and demands preferred by women following an unexpected increase in women’s income share in the household, such as the one brought about by the Argentinean pension reform. To the extent that a more equal distribution of household chores and being the head of the household proxy for greater well-being in the household, our results conform with this literature.⁸

The household decision and allocation literature, however, does not provide a prediction about the impact of income shocks on divorce/separation. Bargaining models with within family non-cooperative threat points (Lundberg and Pollak 1993 and Lundberg and Pollak 1996), for example, depict family settings where divorce is too costly or impossible. Other bargaining models of marriage (McElroy and Horney 1981), however, incorporate divorce/separation as a threat point into the Nash bargaining problem. An increase in the utility in case of divorce/separation leads to a better outcome from the Nash bargaining. Despite not being conditional on divorce, the increase in income brought about by the Argentinean pension reform undoubtedly improves threat points, specially for women, and, according to these models, should increase women’s happiness with their marriage.

The beginnings of the divorce literature (Becker 1974, Ross, Sawhill, and MacIntosh 1975) predicted an increase in the probability of divorce over time as the benefits from marriage, e.g. gender specialization, decreased. In particular, the “independence effect” hypothesis (Ross, Sawhill, and MacIntosh 1975) predicted a decrease in the gains from marriage and, therefore, an increase in divorce/separation rates with the increase in married women’s income relative to their husbands’. This theory, which gained empirical support with the co-movement of female labor force participation and divorce rates in the United States from 1960 until the end of the 70’s, triggered a number of empirical studies particularly within the sociology literature (e.g. Sayer and Bianchi, 2000). One hindering difficulty in this literature, which motivated the work of several economists, is to estimate

⁷Browning, Chiappori, and Lechene 2006 clarify the definitions of unitary and non-unitary models. In particular, they show that “income pooling” is not specific to “unitary” models. Hence, using their model classification, the evidence of a sharing rule that depends on distribution factors as in Bonke and Browning 2009 is consistent with either a “collective” model or with a “distribution factor dependent unitary” model.

⁸Sociologists studying the relationship between household work and earnings find, in general, a negative correlation between women’s earnings and household work (see for example Bittman, England, Sayer, Folbre, and Matheson 2003 and the references there in). Interestingly, this pattern reverses when women start to earn more than their husbands (Bittman, England, Sayer, Folbre, and Matheson 2003 and more recently Bertrand, Pan, and Kamenica 2013). See Biddlecom and Kramarow 1998 for a suggestive relationship between headship and variables related to attitudes and economic power of women.

income effects stemming from truly exogenous shocks. Within the economics literature, the weight of the evidence is in favor of the “independence effect” hypothesis (e.g. Becker, Landes, and Michael 1977, Weiss and Willis 1997, Weiss 1997, Jalovaara 2003, Bobonis 2011, Doiron and Mendolia 2011) although there are noticeable exceptions (Hoffman and Duncan 1995 and more recently Hankins and Hoekstra 2011)^{9,10}. Our results not only concur with the “independence effect” hypothesis but show that these effects are still present in old age.

Another literature also related to our paper is the one that analyzes the effects of pension transfers (Duflo 2000, Bertrand, Mullainathan, and Miller 2003, Edmonds 2006, Posel, Fairburn, and Lund 2006, Sienaert 2008, Ardington, Case, and Hosegood 2009, Ponczek 2011, de Carvalho Filho 2012, Bosch and Guajardo 2012, Danzer 2013). It concludes that pension transfers affect the labor supply of recipients and non-recipient household members, and also improves children outcomes, such as nutrition status and school attendance. The latter effect is observed especially when the pension recipient is female. To the extent that an improvement in children outcomes reveals a higher bargaining power of women within the household, the evidence provided by these papers is very related to our objective.

The rest of the paper is organized as follows. Section 2 describes the pension reform in Argentina. Section 3 describes the data set. Section 4 describes the empirical strategy. Section 5 describes the main results. Section 6 shows the results of placebo treatments, and in Section 7 we allow for heterogeneous effects by education and exploit the panel data dimension of the survey to estimate very short-run effects. Section 8 concludes. Section 9 contains tables and figures.

2 The Pension Reform

In Argentina, women may retire at 60 and men at 65. Besides reaching the retirement age, a worker must have 30 years of Social Security (hereafter SS) contributions to be entitled to collect

⁹When divorce/separation is either illegal or not socially accepted, theory predicts an increase in conflicts following an income shock. Anderson and Genicot 2012, for example, find an increase in male and female suicidal rates in India due to better property rights for women. In a purely theoretical framework, Anderberg and Rainer 2011 also predicts a inverted u-shape relation between female’s income and domestic violence when divorce/separation is not an option.

¹⁰Note that the literature on the determinants of divorce and union dissolution more generally is too extensive to be discussed here. In particular we leave out of the discussion those papers that study policies or transfers that affect the benefits or costs conditional on divorce since the transfers brought about with the Argentinean pension reform were not conditional on marital status.

a pension. These two requisites together with a traditionally low female participation in the labor market (around 44% in the 80s, ILO 2011) and an increasingly high level of informal jobs (45%, Tornarolli and Conconi 2007), resulted in a low pension coverage, especially amongst women: by 2004, only 55% of age-eligible women received a pension, and this rate is only 35% once widows are excluded (Figure 2). Pension coverage was higher for males (75%) due to their higher labor force participation.

In December 2004, the Argentinean Government introduced a reform to the pension system (Law 25994 and Decree 1454/05), which allowed people who had reached the retirement age but did not fulfill the 30-year SS contribution requirement to get a pension. The reform was implemented through a payment schedule, which was officially named “moratorium” and popularly known as “the housewife’s pension” because housewives were perceived as the group of the population that benefited the most. The payment schedule consisted of paying back to the State the amount corresponding to the number of years (up to 30) the individual had failed to contribute to the SS. The debt to the state would be paid in up to 60 monthly installments and was deducted directly from the individuals’ monthly pension benefit. The law also established a maximum deduction of 49%. Hence, the lowest benefit, which was received by those that had never contributed to the system, e.g. housewives, corresponded to 51% of the minimum pension.

Importantly, different cohorts were affected differently by the reform: older cohorts —born in 1944 or earlier— benefited relatively more than younger cohorts. This difference was due to the maximum number of years of missing SS contributions that could be included in the payment schedule which depended exclusively on the year the individual was born. More specifically, the number of years that could be included in the payment schedule were those from the time the person was 18 years old until the year 1993. So for example, a woman born in 1944, who turned 18 in 1962, can include in the moratorium up to 30 years of missing SS contributions and is entitled to a pension by the time she turns 60 even if she never contributed to the SS (see Table 1); and so are all the women older than her. However, younger women born, for example, in 1953 who were 18 years old in 1971 and who will reach the retirement age in 2013, can only include 22 years in the payment schedule (from 1971 to 1993). Thus, women born in 1953 must have at least 8 years of actual SS contributions during the period 1994 – 2013 in order to fulfill the required 30 years of SS contributions and be able to receive a pension when they reach 60. Figure 3 shows the different impact of the reform across

female cohorts. As it can be seen in this figure, the last female cohort to benefit from the moratorium is the one born in 1974 which will be able to include only one year in the payment schedule.

The pension reform, however, took approximately 2 years to be implemented. As D’Elia, Calabria, Calero, Gaiada, and Rottenschweiler 2011 show, expenditures with the moratorium start off in 2007. The number of pension recipients in our data is consistent with that implementation date (see Figure 2).

3 Data

We use the Argentine Continuous Permanent Household Survey (Encuesta Permanente de Hogares Continua, EPH). This is a rotating panel quarterly survey. Each household is in the panel for one year and a half and it is surveyed for two alternating periods of two quarters each: in the first year it is surveyed in two consecutive quarters, it is out of the sample for the next two quarters, and finally it is again surveyed for the following two quarters. The rotating panel is designed in such a way that in each quarter 25% of the panel is replaced by households that are interviewed for the first time. The survey covers 32 urban regions representing 62% of the country’s population. Each quarter, there are approximately 25,000 households surveyed. The survey includes one household questionnaire and individual questionnaires for every person in the household. These questionnaires contain questions about housing conditions, household and individual incomes, demographic characteristics, occupation and working conditions, certain types of social benefits, etc. Unfortunately, however, there is neither information on the number of years each individual contributed to the SS—which would have allowed us to identify those individuals that were more or less affected by the policy— nor it is possible to identify those individuals that actually claimed benefits from the moratorium.

In our empirical analysis below we start by measuring the effect of the reform on different measures of personal income. Concretely, we consider the following outcomes: the probability of receiving a pension, the probability of not having any personal income, the amount of monthly personal income, and for married women also the wife’s share of income within the household and within the couple.^{11,12} We transform Argentinean currency (Pesos ARS) to U.S. dollar (USD) using the

¹¹We denote as “married” both legally married and those living with a partner.

¹²We consider that a woman is receiving a pension whenever she reports “pensions” as a source of her personal

purchasing power parity (PPP) conversion factor for private consumption.¹³ This number represents the units of ARS required to buy the same amounts of goods and services in the domestic market as 1 USD would buy in the United States. We also use the U.S. annual inflation rate to adjust for price changes in United States throughout our period of analysis. Therefore, 1 dollar (PPP 2009) has the same purchasing power as 1 USD had in the United States in 2009.

Once we show that the reform had a huge impact on women’s personal income, we are interested in the effects of the reform on: the marital status of women, in particular the probability of divorce/separation;¹⁴ the identity of the household head; and the housework sharing within the household. The information used to construct the variables related to the identity of the household head and housework sharing comes from the household module of the survey, but unfortunately the respondent to the module is not identified. For each household, the answers in the module identify which household members contribute to household duties —whether they do most of the housework or just help—, as well as whether the household has domestic service or receives some external help.¹⁵ We construct the following variables: i) A dummy variable that takes the value one if the wife is the only responsible for most of the housework activities in the household i.e. no other household member is identified as in charge of *most* of the household chores;¹⁶ ii) a dummy variable that takes the value one if the husband is responsible for most of the housework —whether or not he is the only one responsible, iii) a dummy variable that takes the value one if the husband contributes to housework activities —he is either responsible for most of the housework or just provides some help, iv) a dummy variable that takes the value one if the household has domestic service or external help for housework activities.

Other individual characteristics that we include as control variables in our analysis are regions (urban areas where the EPH is conducted)¹⁷, educational level—high and low— where low education

income in the individual questionnaire.

¹³The PPP conversion factor is published by the International Comparison Program database (World Bank).

¹⁴The survey question does not allow us to distinguish between divorced and separated.

¹⁵Specifically, the household questionnaire has the following question: “*Who does most of the housework?*”. Respondents can indicate up to two household members, domestic service or other help from people who do not live in the household. The questionnaire also asks: “*What other people help in the household chores?*” where respondents indicate which other household members help with these chores, or whether they receive external help or have domestic service. Unfortunately, the database does not have a variable indicating which household member reports this information.

¹⁶We do not construct a similar variable for husbands since there are very few observations where they are the only ones responsible for most of the housework.

¹⁷In our analysis we consider 29 of the 32 urban areas covered by the EPH, since 3 urban areas were incorporated in the EPH in 2006, hence, they are not surveyed during the whole period we analyze.

indicates less than high school diploma, and a dummy variable that equals one if the woman was born abroad. Additionally, for married women, we construct variables to reflect age and educational differences between spouses. The latter is constructed taking differences between spouses' level of education attained, with a positive value when the wife is more educated than the husband.¹⁸

Our sample includes data from the years 2004 to 2009 of women born between 1941 – 1944 and 1950 – 1953 (see Section 4 for the details about the sample selection).¹⁹ Our analysis uses the EPH as repeated cross sections. The final database contains 46,047 individual observations of women aged between 51 and 68 years old. In the pre-reform period, 13% of these women were divorced or separated, 8% were single, 15% were widows, and the rest were married or living with a partner. At that time, 35% of them were the head of their households, and 38% did not receive any personal income. In the subsample of married women, only 7% were the head of the household, on average their personal income represented 20% of the total household income, and 40% of them were the only responsible for doing the household chores.

4 Empirical strategy: Difference-in-Difference Estimation

Although the Argentinean pension reform law was passed in 2004/2005, its effective implementation started in 2007 (see Figure 2 and Figure 3.2 in D'Elia, Calabria, Calero, Gaiada, and Rottenschweiler 2011). Since our data set covers the period 2004 – 2009 we may compare outcomes of treated individuals before and after the law came into effect as part of our identification strategy. Accordingly, we define the period 2004-2006 as the pre-treatment period and the period 2007–2009 as the post-treatment period.²⁰

¹⁸The maximum level of education attained is a categorical variable available in the dataset. We assigned values between 0 to 6 to each category. The maximum education category is “Higher Education (complete)” with the value 6, and the minimum is “no formal education” with the value 0. The other categories are “elementary school (incomplete)”, “elementary school (complete)”, “High School (incomplete)”, “High School (complete)” and “Higher education (incomplete)”.

¹⁹Data for the third quarter of 2007 is not available because some regions could not be surveyed due to administrative problems in the Statistical Institute.

²⁰We do not consider the years before 2004 since the EPH suffered important methodological changes in 2003. Neither do we include data after 2009 to insure women in the control group do not turn 60 and become treated (see Figure 5 for the evolution of retirement rates across time for each cohort between 1941 – 1953). Another important reason to leave years after 2009 out of the sample is the announcement and implementation of the Universal Child Allowance program (Asignación Universal por Hijo para Protección Social) at the end of 2009. This program paid a monthly amount per child under 18 to parents working in the informal sector or unemployed (Resolution ANSES N° 393/2009). By 2011 almost 95% of the beneficiaries were women (ANSES, 2012).

To complete our identification strategy, we exploit a feature of the reform that granted differential treatment to different cohorts. As explained in Section 2, the reform only affects immediately those women that had reached the retirement age (60 years) when the law is enacted. This discontinuity in treatment allows us to identify a treatment and a control group. As Table 2 describes, we define as treated all women born between 1941 and 1944 for two reasons: On the one hand, all these women already turned 60 by 2004 —their ages range between 60 and 65 in the pre-treatment period and between 63 and 68 in the post treatment period—²¹, which allows us to isolate the effect of the reform from the effect of changes in individual labor market decisions that occur at retirement age. On the other hand, in 2007 —the year the reform is implemented— all women in the treatment group are potentially eligible to obtain the maximum benefit (i.e., may include up to 30 years in the payment schedule as shown in Table 1). Note that since we neither observe the number of years individuals contributed to the SS system nor who actually claim benefits from the moratorium, our estimates identify *intention to treat* (ITT) effects. Our control group is composed by women born between 1950 and 1953 who are, by definition, never affected by the reform during our sample period since their ages range between 51 – 56 in the pre-treatment period and between 54 – 59 in the post treatment period.

Figures 6 and 7 show that after the reform the percentage of women in the treatment group who receive a pension increased from approximately 30% to more than 75% and that, as a result, the percentage of women without any personal income fell from roughly 40% to 12%. Figures 6 and 7 also show that: 1) the increase in pension coverage and personal income of women in the treated cohorts were effective in 2007; 2) women from the control group were unaffected by the reform.

Table 4 shows the pre and post-treatment means of a set of relevant variables for the treated and control groups. Differences between the treated and control groups are mostly due to the age difference between the two groups. For example, the treatment group has more widows—and therefore more heads of household and more pension beneficiaries. In addition, because the younger cohorts are typically more educated, there are also noticeable differences in education.

The difference-in-differences strategy relies on the assumption that the evolution of the outcome

²¹To be precise, the EPH does not include information on “year of birth” and only includes information on “age”. This implies that a proportion, hopefully small, of individuals are misclassified. An example would be a woman who declares to be 60 years old in January 2005 but turns 61 in February 2005. This woman would not be classified as treated (nor as control for that matter) although she was born in February 1944.

of the treatment group in the absence of the reform would have been the same as that of the control group, conditional on observed characteristics. We check the plausibility of this assumption by comparing the evolution of the outcomes of interest for the treated and control groups during the pre-treatment period. Naturally, because these are different cohorts, it is important to control for education which is known to vary by cohort. We also correct for other exogenous characteristics such as regional dummies, a dummy that equals one if the woman was born abroad, and quarter-year of the survey. As Figures 9 to 13 show, the trends in all our outcomes are very similar before the reform took effect in 2007. An important concern in our setting is related to potential anticipation effects amongst women in the control group as they perceive themselves as future beneficiaries of the moratorium. It turns out, however, that such anticipation effects would bias downward our difference-in-difference estimates, reinforcing our results.

In summary, our empirical strategy is a standard difference-in-difference where we compare the evolution of outcomes of the treatment group across time with the evolution of outcomes for the control group. Let Y_{it} be the outcome of interest for individual i in time t . Our model specification is

$$y_{it} = \alpha + \beta Treat_i \times Post_t + \delta_i^C + \delta_t^Y + \delta_t^Q + \delta_t^Y \times \delta_t^Q + X_i' \gamma + \varepsilon_{i,t} \quad (1)$$

where $Treat_i$ indicates whether woman i was born in the period 1941 – 1944, $Post_t$ indicates if the outcome is observed in the post treatment period 2007 – 2009, δ_i^C , δ_t^Y and δ_t^Q are cohort, year and quarter fixed effects, X_i is a vector of individual characteristics (i.e. a dummy variable of high level of education, a dummy variable that equals one if the individual was born abroad and 28 dummies for region of residence) and ε_{it} is a residual. The coefficient β represents the difference-in-difference estimate of the effect of the reform.

The baseline results presented in the next Section do not make use of the panel structure of the data. This implies that observations from the same individual are treated as independent. In Section 7.2 we specifically use the panel structure and account for individual fixed effects although at the expense of observing the effects of the reform only in the very short-run and for a much lower number of individuals. Appropriate clustering of the standard errors could account for some of the correlation between error terms belonging to the same individual. For example, if we would apply

two-way clustering at the cohort and year-quarter levels we would account for correlation among observations of the same cohort —whether or not they are observed in the same year-quarter— as well as for correlation among observations in the same quarter —whether or not they belong to the same cohort. However, because the number of clusters for the two-way clustering would be small—8 cohorts and 23 year-quarter periods— we decided to use one-way clustering at the cohort-year-quarter level, which only accounts for correlation among the same cohort when observed in the same year-quarter.

5 Results

5.1 Effects of the reform on women’s income

In this Section we show difference-in-difference (DD hereafter) estimates of the effect of the reform on women’s probability of receiving a pension, on the probability of having no personal income, and on their monthly personal income using equation 1’s specification.²² In columns 1 and 2 of Table 5, we report results for the sample of all women regardless of their marital status whereas in columns 3 and 4 we present estimates when the sample is restricted to married and divorced/separated women (i.e., excluding singles and widows). Results for the sample of married women are shown separately in Table 6.

Results presented in Table 5 indicate that the implementation of the pension reform was very successful in increasing the percentage of women receiving a pension, between 43 – 44 percentage points (pp) for the whole sample and between 53 – 54 pp once widows and singles are excluded. For senior Argentinean women, receiving a pension meant a reduction of 27 pp on the probability of having no personal income or 36 pp once widows and singles are excluded (columns 5-8 in Table 5). Columns 1 and 2 of Table 6 show that married women benefited the most from the reform since the proportion of women without personal income fell by 39 pp.²³

²²All linear probability models presented in Sections 5, 6 and 7 yield similar results to those obtained using probit estimations. For the sake of brevity results from probit estimations are not shown here, but available upon request.

²³Although the reform decreased labor force participation around 8 pp (see Table 9) , most of the effects on income come from the impact on women who did not have any income sources. Our results on labor force participation are in line with those of Bosch and Guajardo (2012) although our effects are larger (the reduction of women labor force participation is about 4 pp in their paper) due to differences in the definitions of treatment and control groups.

Columns 9-12 in Table 5 show the estimates of the impact of the reform on women’s monthly personal income. The estimated effect is between 61-73 USD (PPP 2009), and a similar result is shown in columns 3 and 4 of Table 6 for the group of married women. Note that since these are intention to treat effects —i.e. not all women in the treatment group were effectively treated— the real income effect on the treated is much higher than the ones presented in this table. Nevertheless, results shown in the last four columns of Table 6 indicate that the reform had a significant positive and large impact on a wife’s contribution to the couple’s and the household income which increased by 10 – 11 pp or 50 – 55%.

5.2 Effects of the reform on the probability of divorce/separation

Table 7 reports DD estimates of the effect of the reform on the probability of being divorced or separated. Results show that the implementation of the reform had a positive and significant impact on the probability of divorce and separation, increasing it between 1.8–2.7 pp. These effects are large if we take into account that the share of women in the treatment group who were divorced/separated before the reform was only 10%.

A fair criticism to our analysis would be that our results are potentially affected by compositional effects originated from a different evolution of the proportion of widows in the treated and control groups. For example, women that are married in the pre-treatment but become widows in the post-treatment do not remain in the sample of divorce and married women (“d+m” in the tables) in the post-treatment period. Hence, a higher probability of widowhood amongst the treated automatically generates a larger increase in the rate of divorce/separation ($d/d+m$) for the treatment group because the number of married women in the denominator decreases. Similarly, a higher probability of marriage among singles in the control group would lead to an increase in the denominator for this group and an upward bias in our estimated impact on divorce/separations. We follow three approaches to check that these compositional effects cannot explain our results: 1) we show that excluding widows and singles from the sample does not alter our results; 2) we estimate equation 1 but using as an outcome variable an indicator for being a widow; 3) we estimate equation 1 but using as an outcome variable an indicator for being single. Results of the latter two exercises show that the estimated DD parameter is zero, which indicates that the results presented in Table 7 are

not driven by differences in the evolution of widowhood or spinsterhood among treated and control groups (results not shown here, but available upon request).

5.3 Effects of the reform on the bargaining power of women

DD results in Table 7 show that after the pension reform, the probability of women being the head of the household increased significantly. The estimated effect ranges from 2.8 pp to 3.3 pp, implying a 7.3-8.7 percent increase. For the married women sample (Table 8), the estimated effect of the reform on the probability of women being the head of the household is 1.3 pp, although statistically significant only at the 10 percent level; a result which is consistent with an increase in the bargaining power of wives within the household. The results reported in column 2 of Table 8 come from a regression that includes in addition to women’s education and regional fixed effects, an indicator of being born abroad, and the age and educational differences within couples. The latter two variables are commonly used in the literature as *distribution factors* (Browning, Chiappori, and Weiss 2011) and proxy for women’s bargaining power previous to the reform. Their inclusion does not affect the estimated effects substantially but slightly reinforces our results by making them larger and more precisely estimated.

To further analyze the gains in married women’s bargaining power, we estimate the impact of the pension reform on outcomes related to the division of housework within the household. Given that women are traditionally the ones in charge of housework, an increase in women’s bargaining power within the household is likely to affect these outcomes.²⁴ Although, there is some effect for the sample of married and separated women, the effect is more pronounced and statistically significant for the sample of married women. Concretely, in columns 3 and 4 of Table 8 we show that the reform reduced significantly by 5 pp the probability that the wife is the *only* responsible for household chores. This result, however, would not reflect changes in bargaining power if it were entirely driven by a pure income effect associated with the reform that allowed women to substitute their own time for paid domestic services. In columns 5 and 6 we discard this possibility by showing that the reform has no significant effect on the probability of having domestic service or other kind of external help. The

²⁴In Lundberg and Pollak (1993) “separate spheres” bargaining model, divorce is not an option. Therefore, when bargaining fails, there is a non-cooperative equilibrium with an under-provision of the public good that each member of the couple provides according to gender specialization (the supply of household services in the case of women).

remaining columns in Table 8 show that the reduction in women’s responsibility for housework occurs simultaneously with an increase of 2.4 – 2.5 pp (columns 7 and 8) in the probability that the husband does *some* housework and an increase of 1.4 – 1.6 pp (columns 9 and 10) in the probability that the husband does most of housework, although none of these increases is statistically significant.²⁵ Taken together, the results from Table 8 reflect that gender roles in the household become more alike with the reform. Moreover, since the reform occurs simultaneously with a (small) reduction in women’s labor force participation²⁶ and, hence, an increase in women’s available time to dedicate to household activities, we argue that our estimates of columns (1)-(4) of Table 8 are likely biased downwards. In which case our conclusion about the reform bringing an increase in the bargaining power of women — allowing them to be less involved in housework activities — is reinforced.

6 Placebos

One concern with our methodology is that different age profiles in the treatment and control groups may blur the identification of the treatment effect. While effective in controlling for age differences within treatment and control groups, the cohort and year dummies included in all the estimations so far, are ineffective across groups because their age profiles do not overlap. Hence, to discard that results obtained in Section 5 (Tables 7 and 8) are attributed to the different outcome trends associated with the different age profiles across groups, we estimate a placebo treatment effect using data from pre-treatment years. The idea is to show that age differences across groups have zero impact on DD estimates.²⁷

Specifically, as in our original framework we include 6 years in our analysis (1996 – 2001), and define the period 1996 – 1998 as the placebo pre-treatment period, and 1999 – 2001 as the placebo post-treatment period.²⁸ In the placebo treatment group, we include women born between 1933 and 1936, while in the placebo control group we have women born between 1942 and 1945. Therefore, the individuals in these placebo treatment and control groups are the same age of individuals included

²⁵Bittman, England, Sayer, Folbre, and Matheson (2003), for example, find that an increase in the share of women’s income in the household is not related to an increase in husbands’ housework participation. In their paper, however, although they have a large set of controls, income shares are taken as exogenous variables.

²⁶Results in Table 9 show that, on average, the reform reduced by 8 – 9 pp women’s labor force participation.

²⁷For this placebo analysis we use data from the EPH Puntual, a survey that was replaced by the EPH Continua by the end of 2003.

²⁸Results of the placebo DD are robust to different definitions of “pre” and “post” periods.

in our original groups (see Tables 2 and 3). If there were an age effect instead of an income effect driving our results, the results of this placebo DD should be similar to those we presented in Tables 7 and 8.

Tables 10 and 11 present the results of the placebo DD. First, in columns 1 to 12 of Table 10 we check that the evolution of income of the placebo treatment and control groups in the placebo pre and post treatment periods is similar. Indeed, all coefficients are close to zero in magnitude and not statistically different from zero. Results displayed in columns 13 to 16 and 17 to 20 of Table 10 analyze whether there are any effects on the probability of being divorced/separated and on the probability of women being the head of the household, respectively. The estimated effects are very different from the ones in Table 7, often with the opposite sign, although not statistically significant. The same pattern is observed for the sample of married women –Table 11– where all coefficients are close to zero and not statistically significant, except women being the head of the household which goes in the opposite direction. Unfortunately, the EPH Puntual does not include questions about housework sharing within the household.

7 Extensions

In this Section we provide evidence of heterogeneous effects of the reform by educational attainment (Section 7.1) and we repeat the analysis done in Section 5 using the panel dimension of the EPH (Section 7.2).

7.1 Heterogeneous Impacts of the Reform by Educational Groups

In this Section we are interested in checking whether the effects of the reform vary by educational attainment. To analyze the possible heterogeneous effects of the reform we conducted the same regressions as in Section 5 but separating the samples by educational level—high and low, where low education indicates less than high school diploma. The analysis of heterogeneous effects in this Section reveals large differences in the way different educational groups were affected by a permanent income shock. While high-educated women opted-out by increasing their probability of divorce/separation, low-educated opted-in and gained more bargaining power within their marriages.

We start by analyzing the effects of the reform on income by educational attainment. In the interest of brevity, we only report results when controlling for all covariates. Table 13 shows that, although low educated women are in fact the most affected by the reform, so are high educated women. Accordingly, the reform increased the probability of receiving a pension by 50 – 61 pp for women with low education and by 31 – 38 pp for those with high education. Results also indicate that the probability of not having any personal income was reduced by 30 – 41 pp for women with low education and by 19 – 26 pp for women with high education. Despite the high-educated’s higher attachment to the formal labor market, which should grant them higher pensions under the reform, results show that the average increase in the monthly personal income was larger for the low educated women— between 83-92 USD (PPP 2009) — than for the high-educated —between 52-76 USD (PPP 2009). This apparently contradictory result simply confirms that high educated women were less likely to enjoy the benefits from the reform. Results are similar for the subsample of married women. Consistent with the previous results, the low-educated married women saw a larger jump on their relative share of the household’s (12.5 pp) and couple’s income (15 pp) compared to the high-educated group (6 pp and 5 pp, respectively).

We now discuss the effects of the reform on the probability of divorce/separation by educational attainment. Results reported in the first two columns of Table 14 indicate that the effect of the reform on divorces and separations is mainly driven by the group of high educated women despite being the least affected on average by the reform. For the two subsamples and specifications we find a significant increase in the probability of divorce/separations for the high educated women, between 3.1 – 5.6 pp, while the effect for the low educated is never statistically significant. We can think of at least two non-exclusive explanations for why there are no effects on divorce/separation for the low-educated: (a) given their pre-reform disadvantage within the household, the gains of a negotiated reallocation of resources may outweigh the gains from divorce or separation (probably the resources obtained from a pension are not sufficient to live alone); (b) social and cultural factors may be important obstacles that preclude low educated women to take such a decision.²⁹ Next, we give evidence in favor of the first explanation i.e. that the income increase brought about by the reform led to gains among the low-educated women who remain married.

²⁹It is conceivable that divorce/separation is not an option for the low-educated as in Lundberg and Pollak (1993). In that case, their model predicts that when bargaining fails equilibrium reverts to a situation of under-provision of public goods such as household chores.

Finally, we look at differential effects of the reform on the bargaining power of women. Regarding our first indicator i.e. the probability of being the head of household, we find that the positive effect shown in Section 5 is mainly driven by the effect of the reform on high educated women; while it increases very significantly by 7.1 – 8.3 pp for the high educated it is not statistically significantly for the low educated (see Table 14). However, when we re-estimate the model for the subsample of married women, the effect of the reform on the probability of being the head of the household is no longer statistically significant for any of the two educational groups. The latter shows that the effect for the high-educated group observed in Table 14 is simply a natural consequence of the increase in divorce/separation for this group. Regarding our second set of indicators i.e. the ones related to the division of housework, we observe an interesting pattern: the negative effect of the reform on the probability that wives are the only responsible for housework is mainly driven by the effects on the low educated women. Again, although coefficients are positive, there is not sufficient evidence to indicate that women’s lower responsibility for housework activities is partially compensated by an increase in the husbands’ participation.

7.2 Short-run Effect of the Reform Using Panel Data

In this Section we exploit the panel dimension of the EPH survey. We restrict our sample to those individuals who are observed in the pre-reform period and can be followed after the reform is implemented. Given that each household in the EPH survey is followed for 1 and a half years, we keep in our sample those individuals interviewed for the first time between the pre-reform quarters 2005-IV and 2006-IV. Hence, the window of analysis using panel data goes from 2005-IV to 2008-I (10 quarters).³⁰ The shorter time window allows us to extend the definition of treatment and control groups, considering additional cohorts that were disregarded in the DD analysis in the previous sections. We define as the treatment group all women born between 1941 and 1945 –i.e., we add the 1945 cohort to those considered in the analysis of Section 5 and Section 7.1. All women in this group already turned 60 by 2005-IV and are potentially eligible since 2007-I to obtain the maximum benefit (i.e., they may include the maximum of 30 years in the moratorium payment schedule, see Table 1). To our control group, we add the 1948 and 1949 cohorts since these cohorts do not turn

³⁰Individuals interviewed for the first time in 2005-IV are followed until 2007-I, while individuals observed for the first time in 2006-IV are followed until 2008-I.

60 during the period under study and, hence, are not affected by the reform. Our control group is then composed of women born between 1948 and 1953.³¹

Using the panel has the following advantages: a) it allows controlling for unobserved time-invariant individual characteristics; b) it allows considering additional cohorts and in this way decrease the age difference between treatment and control groups; However, the approach has its limitations: a) the sample size is much smaller; b) we can only perform an analysis of the very short run effects of the reform since individuals are only followed for a year and a half; c) attrition is likely to be related to the treatment, since women that leave their spouses/partners are more likely to be dropped from the sample, which would create an automatic lower bias in our estimates.³² Hence, conditional on observing an individual in the pre-treatment period, we can observe her again, at most, five quarters after the implementation of the reform. In this short period of time many of our outcomes of interest may not change; either because some of the potential beneficiaries of the reform may failed to have effective access to the benefits, or because household dynamics, specially for the elderly, may take more time. Indeed, in the following analysis two outcomes of interest –probability of divorce/separation and probability of being the head of the household– are disregarded since there is almost no variability in these outcomes in the period under analysis. Therefore, we focus exclusively on the effects of the reform on income and the distribution of housework for married women, which, by definition, would not be affected by attrition related to union disolutions.

Table 15 shows the fixed effects estimates of the effects of the reform on women’s outcomes for the sample of women who are married and remain married throughout the following 5 quarters of the panel.³³ The reported coefficients in the first row of the table are the DD estimates specified in equation 1 adding an individual fixed effect. Results in columns 1 to 5 of Table 15 confirm that, even in the short run, the implementation of the pension reform led to a significant increase in the probability of receiving a pension (30 pp), a reduction in the percentage of females without any personal income (24 pp), an increase in their monthly personal income (40 USD PPP 2009) and in their participation in the couple’s (8 pp) and household’s (6 pp) total income. As expected, these short run effects are smaller than the ones reported in Table 6. Consistent with results from Section

³¹We get the same results if we restrict the analysis to the same cohorts considered in section 5.

³²Cruces and Wodon 2003 refer to the problem of attrition in the EPH puntual which is the dataset that preceeded the EPH continua used in the estimation of the baseline results. Although the EPH continua contains many improvements in relation to the EPH puntual we are concerned that attrition may still be an important concern.

³³As described in Section 3, we do not observe the individual in 2 of the 5 consecutive quarters.

7.1, the second and third rows of Table 15 show that in the short-run, the pension reform had an effect on the low-educated's personal income while it did not affect the average personal income of the high-educated (see column 3).

Despite the notable improvements in the position of women within the household in terms of income –specially for low educated women– we do not find a short run effect of the reform on outcomes related to the distribution of household chores for married women–columns 7 to 9 of table 15. A possible explanation is that the time elapsed since the implementation of the reform is not enough for women to internalize the gains in their bargaining power.

7.2.1 Placebos using the Panel

We perform a placebo analysis using the panel data in a period prior to the implementation of the reform. As in the previous subsection we consider a period of 10 quarters (2003-IV to 2006-I), and define the period 2003-IV to 2004-IV as the placebo pre-treatment period, and 2005-I to 2006-I as the placebo post-treatment period. To mimic the age structure of our treatment and control groups we define as placebo treatment group cohorts between 1939 to 1943 –which are 60 years old or more in 2003-IV– and as placebo control group cohorts those born between 1946 and 1951 –which are less than 60 years old by 2006-I.

Table 16 reports panel data fixed effects estimates using the placebo sample. As predicted, there are no effects on the probability of pension receipt, on the probability of having no personal income, and on the share of wife's income within the couple or household's income. There is a (small) statistically significant decrease in nominal personal income which may be a consequence of a reduction in the probability of the high-educated women being employed. Importantly, there are no statistically significant changes in outcomes related to the division of household chores within the household.

7.2.2 Defining treatment and control in the same cohort

The panel allows us to define a control and treatment group within the same cohorts using information on pre-treatment retirement status. Let's start by restricting the analysis to married women born

between 1932 to 1945 observed in the period 2005-IV to 2008-I; all these women already turned 60 by 2005-IV. Then, include in the treatment group all women that do not receive a pension in the pre-treatment period and in the control group all women that already receive a pension in the pre-treatment period. Our results with this alternative definition are the same as before: the reform has a large and positive impact on the probability of receiving a pension, a large and negative impact on the probability of not having personal income, and a positive impact on the amount of monthly personal income. Similarly, the short run impacts on the division of household chores are not statistically significant.³⁴

8 Conclusion

What happens inside the household is often not observable to researchers. However, there seems to be a consensus that processes that occur inside the household have potentially large consequences for economic and social outcomes of individuals and society as a whole. The economic literature has provided evidence that transfer programs can, presumably by altering such processes, have large effects on economic outcomes (e.g. labor force participation, children development). In this paper we focus on senior women—all above the retirement age—and ask whether even relatively small transfers can affect their marital status and bargaining power within the household. We find surprising effects in this population; both the union dissolution and outcomes related to bargain power are affected by public transfers.

Our identification strategy comes from estimating the effects of the 2004/2005 Argentinean pension reform on a number of outcomes by differences-and-differences. We use data from the Argentine Continuous Permanent Household Survey (*Encuesta Permanente de Hogares Continua*) for the years 2004 – 2009. The Argentinean pension reform is an interesting application because it not only affected more than 2 million women in Argentina but also because it affected their permanent income substantially; in particular, their income share within the couple increased by an average of 50 – 55%. This large income shock had an impact on the probability of divorce/separation which increased by 18 – 19% for 60 – 65 year old women; a large impact on the probability of women headship, which increased by 7 – 19% for all women and by 20 – 22% amongst married women; and finally, a decrease

³⁴Results available upon request.

of 11% in the likelihood that women are the only responsables for household chores.

Our result conform with the predictions and results of two main literatures; On the one hand, the increase in the probability of divorce/separation is consistent with the “independent income effect” postulated by sociologists in the context of the divorce literature and later also supported by economists. On the other hand, the results on the probability of women’s headship and on the division of household chores are consistent with the literature on the decision and allocation within the household, which predicts that exogenous changes in household members relative incomes affect household demands and outcomes.

References

- ANDERBERG, D., AND H. RAINER (2011): “Domestic Abuse: Instrumental Violence and Economic Incentives,” .
- ANDERSON, S., AND G. GENICOT (2012): “Suicide and Property Rights in India.,” Discussion paper.
- ANSES, O. D. L. S. S. (2012): “La Asignación Universal por Hijo para Protección Social en perspectiva. La política pública como restauradora de derechos,” .
- ARDINGTON, C., A. CASE, AND V. HOSEGOOD (2009): “Labor Supply Responses to Large Social Transfers: Longitudinal Evidence from South Africa,” *American Economic Journal: Applied Economics*, 1(1), 22–48.
- BECKER, G. (1974): “A theory of marriage,” in *Economics of the family: Marriage, children, and human capital*, pp. 299–351. UMI.
- BECKER, G. S., E. M. LANDES, AND R. T. MICHAEL (1977): “An economic analysis of marital instability,” *The Journal of Political Economy*, pp. 1141–1187.
- BENIGNI, M., A. LIEUTIER, AND G. LUDMER (2012): “Evolución reciente de sistema previsional argentino y su impacto en la pobreza de los adultos mayores1,” *Debate PÃºblico. Reflexión de Trabajo Social*, 2(4).
- BERNIELL, L. (2012): “Finanzas Públicas y Equidad en América Latina,” in *Finanzas Públicas para el Desarrollo: Fortaleciendo la Conexión entre Ingresos y Gastos*. Corporación Andina de Fomento.
- BERTRAND, M., S. MULLAINATHAN, AND D. MILLER (2003): “Public policy and extended families: evidence from pensions in South Africa,” *The World Bank Economic Review*, 17(1), 27–50.
- BERTRAND, M., J. PAN, AND E. KAMENICA (2013): “Gender Identity and Relative Income within Households,” Working Paper 19023, National Bureau of Economic Research.
- BIDDLECOM, A. E., AND E. A. KRAMAROW (1998): “Household headship among married women: The roles of economic power, education, and convention,” *Journal of Family and Economic Issues*, 19(4), 367–382.

- BITTMAN, M., P. ENGLAND, L. SAYER, N. FOLBRE, AND G. MATHESON (2003): “When Does Gender Trump Money? Bargaining and Time in Household Work1,” *American Journal of Sociology*, 109(1), 186–214.
- BOBONIS, G. J. (2011): “The Impact of Conditional Cash Transfers on Marriage and Divorce,” *Economic Development and Cultural Change*, 59(2), 281–312.
- BONKE, J., AND M. BROWNING (2009): “The Allocation of Expenditures within the Household: A New Survey*,” *Fiscal Studies*, 30(3-4), 461–481.
- BOSCH, M., AND J. GUAJARDO (2012): “Labor Market Impacts of Non-Contributory Pensions: The Case of Argentina’s Moratorium,” Discussion paper, Inter-American Development Bank.
- BOURGUIGNON, F., M. BROWNING, P.-A. CHIAPPORI, AND V. LECHENE (1993): “Intra household allocation of consumption: A model and some evidence from French data,” *Annales d’Economie et de Statistique*, pp. 137–156.
- BROWNING, M., AND P. CHIAPPORI (1998): “Efficient intra-household allocations: A general characterization and empirical tests,” *Econometrica*, pp. 1241–1278.
- BROWNING, M., P. CHIAPPORI, AND V. LECHENE (2006): “Collective and unitary models: A clarification,” *Review of Economics of the Household*, 4(1), 5–14.
- BROWNING, M., P. CHIAPPORI, AND Y. WEISS (2011): “Family economics,” *Tel Aviv University, unpublished textbook manuscript*.
- CHIAPPORI, P.-A. (1988): “Rational household labor supply,” *Econometrica: Journal of the Econometric Society*, pp. 63–90.
- CRUCES, G., AND Q. WODON (2003): “Risk-adjusted poverty in Argentina: measurement and determinants,” .
- DANZER, A. M. (2013): “Benefit Generosity and the Income Effect on Labour Supply: Quasi-Experimental Evidence,” *The Economic Journal*.
- DE CARVALHO FILHO, I. (2012): “Household Income as a Determinant of Child Labor and School Enrollment in Brazil: Evidence from a Social Security Reform,” *Economic Development and Cultural Change*, 60(2), 399–435.

- D'ELIA, V. V., A. CALABRIA, A. CALERO, J. GAIADA, AND S. ROTTENSCHWEILER (2011): "Análisis de la cobertura previsional del SIPA: protección, inclusión e igualdad," *Serie Estudios de la Seguridad Social, Gerencia Estudios de la Seguridad Social, ANSES*.
- DOIRON, D., AND S. MENDOLIA (2011): "The impact of job loss on family dissolution," *Journal of Population Economics*, 25(1), 367–398.
- DUFLO, E. (2000): "Child health and household resources in South Africa: Evidence from the Old Age Pension program," *The American Economic Review*, 90(2), 393–398.
- EDMONDS, E. (2006): "Child labor and schooling responses to anticipated income in South Africa," *Journal of Development Economics*, 81(2), 386–414.
- GONZÁLEZ, L., AND T. K. VIITANEN (2009): "The effect of divorce laws on divorce rates in Europe," *European Economic Review*, 53(2), 127 – 138.
- GRAY, J. (1998): "Divorce-law changes, household bargaining, and married women's labor supply," *American Economic Review*, pp. 628–642.
- HANKINS, S., AND M. HOEKSTRA (2011): "Lucky in life, unlucky in love? The effect of random income shocks on marriage and divorce," *Journal of Human Resources*, 46(2), 403–426.
- HOFFMAN, S., AND G. DUNCAN (1995): "The effect of incomes, wages, and AFDC benefits on marital disruption," *Journal of Human Resources*, pp. 19–41.
- ILO (2011): "Key Indicators of the Labour Market (KILM) 6th edition,." .
- JALOVAARA, M. (2003): "The joint effects of marriage partners' socioeconomic positions on the risk of divorce," *Demography*, 40(1), 67–81.
- LEVY, S., AND N. SCHADY (2013): "Latin America's Social Policy Challenge: Education, Social Insurance, Redistribution," *Journal of Economic Perspectives*, 27(2), 193–218.
- LUNDBERG, S., AND R. POLLAK (1993): "Separate spheres bargaining and the marriage market," *Journal of Political Economy*, pp. 988–1010.
- (1996): "Bargaining and distribution in marriage," *The Journal of Economic Perspectives*, 10(4), 139–158.

- LUNDBERG, S. J., R. A. POLLAK, AND T. J. WALES (1997): “Do husbands and wives pool their resources? Evidence from the United Kingdom child benefit,” *Journal of Human Resources*, pp. 463–480.
- LUSTIG, N., AND C. PESSINO (2013): “Social Spending and Income Redistribution in Argentina During the 2000s: The Rising Role of Noncontributory Pensions,” Working paper, Commitment to Equity.
- MANSEY, M., AND M. BROWN (1980): “Marriage and household decision-making: A bargaining analysis,” *International Economic Review*, pp. 31–44.
- MCELROY, M. (1990): “The empirical content of Nash-bargained household behavior,” *Journal of human resources*, pp. 559–583.
- MCELROY, M. B., AND M. J. HORNEY (1981): “Nash-bargained household decisions: Toward a generalization of the theory of demand,” *International Economic Review*, 22(2), 333–349.
- PONCZEK, V. (2011): “Income and bargaining effects on education and health in Brazil,” *Journal of Development Economics*, 94(2), 242–253.
- POSEL, D., J. FAIRBURN, AND F. LUND (2006): “Labour migration and households: A reconsideration of the effects of the social pension on labour supply in South Africa,” *Economic Modelling*, 23(5), 836–853.
- ROSS, H., I. SAWHILL, AND A. MACINTOSH (1975): *Time of transition: The growth of families headed by women*. The Urban Institute.
- SAYER, L., AND S. BIANCHI (2000): “Women’s Economic Independence and the Probability of Divorce A Review and Reexamination,” *Journal of Family Issues*, 21(7), 906–943.
- SCHULTZ, T. (1990): “Testing the neoclassical model of family labor supply and fertility,” *Journal of Human Resources*, pp. 599–634.
- SIENAERT, A. (2008): “The labour supply effects of the South African state old age pension: Theory, evidence and implications,” Discussion paper, Southern Africa Labour and Development Research Unit, University of Cape Town.

THOMAS, D. (1990): “Intra-household resource allocation: An inferential approach,” *Journal of human resources*, pp. 635–664.

TORNAROLLI, L., AND A. CONCONI (2007): “Informalidad y movilidad laboral: un análisis empírico para Argentina,” *Documento de Trabajo*, 59.

WEISS, Y. (1997): “The formation and dissolution of families: Why marry? Who marries whom? And what happens upon divorce,” *Handbook of population and family economics*, 1, 81–123.

WEISS, Y., AND R. WILLIS (1997): “Match quality, new information, and marital dissolution,” *Journal of Labor Economics*, pp. 293–329.

9 Tablas and Figures

Table 1: Examples of the different impact of the pension reform across cohorts

Birth year	Year she is 18 years old	Year she is 60 years old	Years allowed to include in the payment schedule $\min(1993 - \text{column (2)}, 30)$	Effective years of SS contributions needed to retire at 60 $30 - \min(1993 - \text{column (2)}, 30)$
(1)	(2)	(3)	(4)	(5)
1941	1959	2001	30	0
1944	1962	2004	30	0
1950	1968	2010	25	5
1953	1971	2013	22	8

Required years of effective social security contributions (Column 5) = $30 - \min\{1993 - (\text{birth year} + 18), 30\}$

Table 2: Definition of treated and control groups

Women	Pre treatment (2004-2006)	Post treatment (2007-2009)
Treated cohorts born 1941-1944	ages 60-65	ages 63-68
Control cohorts born 1950-1953	ages 51-56	ages 54-59

Table 3: Placebo DD: Definition of treated and control groups

Women	Placebo pre treatment (1996-1998)	Placebo post treatment (1999-2001)
Placebo treated cohorts born 1933-1936	ages 60-65	ages 63-68
Placebo control cohorts born 1942-1945	ages 51-56	ages 54-59

Table 4: Mean

Variable	Control cohorts		Treated cohorts		All sample	
	2004-06	2007-09	2004-06	2007-09	2004-06	2007-09
All women						
Pension recipient	0.08	0.12	0.30	0.77	0.18	0.39
No personal income	0.36	0.34	0.40	0.12	0.38	0.25
Personal income (Argentine Pesos: AR\$)	510	1017	412	928	468	980
Personal income (2009 PPP USD)	341	615	275	562	313	593
Divorced or separated	0.16	0.15	0.10	0.10	0.13	0.13
Head of household	0.32	0.36	0.38	0.44	0.35	0.40
Woman is the only responsible for housework	0.37	0.39	0.44	0.45	0.40	0.42
Education (high=1, low=0)	0.45	0.46	0.32	0.33	0.39	0.40
Born abroad	0.07	0.08	0.10	0.10	0.08	0.09
Live with partner	0.09	0.09	0.07	0.07	0.08	0.08
Married	0.58	0.57	0.52	0.48	0.56	0.53
Widow	0.08	0.11	0.23	0.26	0.15	0.17
Single	0.08	0.09	0.08	0.09	0.08	0.09
Active (in the labor market)	0.61	0.56	0.37	0.24	0.50	0.43
Divorced & married						
Pension recipient	0.04	0.06	0.17	0.72	0.09	0.31
No personal income	0.41	0.39	0.52	0.16	0.45	0.31
Personal income (Argentine Pesos: AR\$)	481	958	333	783	424	893
Personal income (2009 PPP USD)	321	580	222	474	283	541
Divorced or separated	0.19	0.18	0.14	0.16	0.17	0.18
Head of household	0.23	0.25	0.18	0.23	0.21	0.24
Woman is the only responsible for housework	0.37	0.39	0.44	0.43	0.40	0.40
Education (high=1, low=0)	0.46	0.47	0.34	0.33	0.41	0.42
Born abroad	0.07	0.09	0.10	0.11	0.08	0.09
Active (in the labor market)	0.58	0.55	0.34	0.22	0.49	0.43
Married						
Pension recipient	0.04	0.06	0.16	0.72	0.09	0.31
No personal income	0.48	0.46	0.57	0.18	0.52	0.35
Personal income (Argentine Pesos: AR\$)	412	849	298	722	367	801
Personal income (2009 PPP USD)	276	514	199	436	245	485
Wife's share of income within household	0.21	0.21	0.18	0.28	0.20	0.24
Wife's share of income within couple	0.26	0.27	0.22	0.34	0.24	0.29
Head of household	0.08	0.11	0.07	0.11	0.07	0.11
Wife is the only responsible for housework	0.37	0.40	0.44	0.41	0.40	0.40
Husband does some housework	0.24	0.27	0.30	0.35	0.26	0.30
Husband responsible for housework	0.11	0.15	0.13	0.18	0.11	0.16
Have domestic service or external help	0.04	0.05	0.03	0.03	0.04	0.04
Education (high=1, low=0)	0.45	0.46	0.33	0.31	0.40	0.40
Born abroad	0.07	0.09	0.11	0.11	0.09	0.09
Couple's age difference	2.65	2.51	2.50	2.50	2.59	2.50
Couple's education difference	0.06	0.06	-0.15	-0.16	-0.03	-0.02
Active (in the labor market)	0.52	0.50	0.30	0.18	0.44	0.38
Observations	13071	13359	9537	9680	23008	23039

Table 5: Effects of the reform on income

	Probability of receiving a pension				Probability of not having any personal income				Women's personal income (dollars PPP)			
	Whole sample		Divorced & married		Whole sample		Divorced & married		Whole sample		Divorced & married	
	d+m+w+s		d+m		d+m+w+s		d+m		d+m+w+s		d+m	
	(1)	(2)	(3)	(4)	(5)	(6)	(7)	(8)	(9)	(10)	(11)	(12)
Post*Treated	0.437*** (0.0135)	0.434*** (0.0135)	0.535*** (0.0176)	0.532*** (0.0176)	-0.269*** (0.0122)	-0.267*** (0.0120)	-0.361*** (0.0168)	-0.362*** (0.0168)	73.12*** (13.47)	68.47*** (12.69)	60.97*** (14.67)	65.64*** (13.66)
Education high (dummy)		x		x		x		x		x		x
Born abroad		x		x		x		x		x		x
Region fixed effects		x		x		x		x		x		x
Observations	46,047	46,047	34,039	34,039	46,047	46,047	34,039	34,039	46,047	46,047	34,039	34,039
Obs. in treatment group	19,217	19,217	12,554	12,554	19,217	19,217	12,554	12,554	19,217	19,217	12,554	12,554
Obs. in control group	26,830	26,830	21,485	21,485	26,830	26,830	21,485	21,485	26,830	26,830	21,485	21,485
Mean dependent variable	0.3	0.3	0.17	0.17	0.4	0.4	0.52	0.52	275	275	222.3	222.3

The dependent variables are: a dummy that equals one when the woman receives a pension (columns 1-4); a dummy that equals one when she has no personal income (columns 5-8); and the woman's monthly personal income in international 2009 PPP dollars (columns 9-12). The coefficient on Post*Treated is the estimated parameter β of equation 1 which is the DD estimates (OLS) of the effect of the reform on each of the outcomes. Period 2004-2006 is the pre-treatment period and period 2007-2009 is the post-treatment period. The treatment group includes all women born between 1941 and 1944, and the control group women born between 1950 and 1953. All regressions include the following control variables: cohort, year and quarter fixed effects, interactions between the last two, and a dummy that indicates whether the woman belongs to the top 1% of personal income. The whole sample includes all women regardless of their marital status. Other individual characteristics in the even columns are: a dummy variable that equals one if the maximum level of education attained is at least a high school diploma; a dummy variable that equals one if the woman was born abroad; and regions fixed effects (29 urban areas). The sample "divorced & married" is restricted to married (m) and divorced/separated women (d), i.e. it excludes singles (s) and widows (w). Data source: Argentine Continuous Permanent Household Survey (Encuesta Permanente de Hogares Continua, EPH). Robust standard errors clustered at cohort-year-quarter in parentheses. *** p<0.01, ** p<0.05, * p<0.1.

Table 6: Effects of the reform on income.
Sample of married women

	Probability of receiving a pension		Wife does not have personal income		Wife's personal income (PPP Dollars)		Wife's share of income within household		Wife's share of income within couple	
	(1)	(2)	(3)	(4)	(5)	(6)	(7)	(8)	(9)	(10)
Post*treated	0.546*** (0.0179)	0.544*** (0.0178)	-0.387*** (0.0186)	-0.390*** (0.0179)	64.02*** (16.87)	71.14*** (15.55)	0.101*** (0.00931)	0.102*** (0.00899)	0.110*** (0.0107)	0.112*** (0.0103)
Education high (dummy)		x		x		x		x		x
Region fixed effects		x		x		x		x		x
Couple's age difference		x		x		x		x		x
Couple's education difference		x		x		x		x		x
Born abroad		x		x		x		x		x
Observations	27,157	27,157	27,157	27,157	27,157	27,157	26,954	26,954	26,544	26,544
Obs. in treatment group	10,304	10,304	10,304	10,304	10,304	10,304	10,304	10,304	10,304	10,304
Obs. in control group	16,853	16,853	16,853	16,853	16,853	16,853	16,853	16,853	16,853	16,853
Mean dependent variable	0.16	0.16	0.57	0.57	199.3	199.3	0.18	0.18	0.22	0.22

The dependent variables are: a dummy that equals one when the wife receives a pension (columns 1-2), a dummy that equals one when she has no personal income (columns 3-4), wife's personal income in international 2009 PPP dollars (columns 5-6), the share of wife's income within the household (columns 7-8) and within the couple (columns 9-10). The coefficient on Post*Treated is the estimated parameter β of equation 1 which is the DD estimates (OLS) of the effect of the reform on each of the outcomes. Period 2004-2006 is the pre-treatment period and period 2007-2009 is the post-treatment period. The treatment group includes all women born between 1941 and 1944, and the control group women born between 1950 and 1953. All regressions include the following control variables: cohort, year and quarter fixed effects, interactions between the last two, and a dummy that indicates whether the woman belongs to the top 1% of personal income. Other individual characteristics in the even columns are: a dummy variable that equals one if the maximum level of education attained is at least a high school diploma; a dummy variable that equals one if the woman was born abroad; regions fixed effects (29 urban areas); and differences between spouses' age and level of education attained. Data source: Argentine Continuous Permanent Household Survey (Encuesta Permanente de Hogares Continua, EPH). Robust standard errors clustered at cohort-year-quarter in parentheses. *** $p < 0.01$, ** $p < 0.05$, * $p < 0.1$.

Table 7: Effects of the reform on the probability of being divorced/separated, and the bargaining power of women

	Probability of women being divorced/separated				Probability of women being the head of the household				Woman is the only responsible for housework			
	Whole sample		Divorced & married		Whole sample		Divorced & married		Whole sample		Divorced & married	
	d+m+w+s		d+m		d+m+w+s		d+m		d+m+w+s		d+m	
	(1)	(2)	(3)	(4)	(5)	(6)	(7)	(8)	(9)	(10)	(11)	(12)
Post*treated	0.0180** (0.00829)	0.0183** (0.00829)	0.0254** (0.0113)	0.0269** (0.0114)	0.0284*** (0.0107)	0.0277** (0.0107)	0.0321*** (0.0112)	0.0334*** (0.0114)	-0.0126 (0.0121)	-0.0121 (0.0121)	-0.0257* (0.0140)	-0.0244* (0.0141)
Education high (dummy)		x		x		x		x		x		x
Region fixed effects		x		x		x		x		x		x
Born abroad		x		x		x		x		x		x
Observations	46,047	46,047	34,039	34,039	46,047	46,047	34,039	34,039	46,047	46,047	34,039	34,039
Obs. in treatment group	19,217	19,217	12,554	12,554	19,217	19,217	12,554	12,554	19,217	19,217	12,554	12,554
Obs. in control group	26,830	26,830	21,485	21,485	26,830	26,830	21,485	21,485	26,830	26,830	21,485	21,485
Mean dependent variable	0.10	0.10	0.14	0.14	0.38	0.38	0.18	0.18	0.44	0.44	0.44	0.44

The dependent variables are: a dummy that equals one if the woman is divorced or separated (Columns 1-4), a dummy that equals one if she is the head of the household (Columns 5-8), and a dummy that equals one if she is the only household member responsible for housework (Columns 9-12). The coefficient on Post*Treated is the estimated parameter β of equation 1 which is the DD estimates (OLS) of the effect of the reform on each of the outcomes. Period 2004-2006 is the pre-treatment period and period 2007-2009 is the post-treatment period. The treatment group includes all women born between 1941 and 1944, and the control group women born between 1950 and 1953. All regressions include the following control variables: cohort, year and quarter fixed effects, interactions between the last two, and a dummy that indicates whether the woman belongs to the top 1% of personal income. Other individual characteristics in the even columns are: a dummy variable that equals one if the maximum level of education attained is at least a high school diploma; a dummy variable that equals one if the woman was born abroad; and regions fixed effects (29 urban areas). The “whole sample” includes all women regardless of their marital status. The sample “divorced & married” is restricted to married (m) and divorced/separated women (d), i.e. it excludes singles (s) and widows (w). Data source: Argentine Continuous Permanent Household Survey (Encuesta Permanente de Hogares Continua, EPH). Robust standard errors clustered at cohort-year-quarter in parentheses. *** p<0.01, ** p<0.05, * p<0.1.

Table 8: Effects of the reform on the bargaining power of women
Sample of married women

	Wife is the head of household		Wife is the only responsible for housework		Domestic service or external help		Husband does some or most housework		Husband does most housework	
	(1)	(2)	(3)	(4)	(5)	(6)	(7)	(8)	(9)	(10)
Post*treated	0.0134*	0.0145*	-0.0502***	-0.0497***	0.0049	0.0060	0.0237	0.0251	0.0140	0.0163
	(0.00807)	(0.00769)	(0.0150)	(0.0151)	(0.0054)	(0.0053)	(0.0170)	(0.0168)	(0.0121)	(0.0122)
Education high (dummy)		x		x		x		x		x
Region fixed effects		x		x		x		x		x
Couple's age difference		x		x		x		x		x
Couple's education difference		x		x		x		x		x
Born abroad		x		x		x		x		x
Observations	27,157	27,157	27,157	27,157	27,157	27,157	27,157	27,157	27,157	27,157
Obs. in treatment group	10,304	10,304	10,304	10,304	10,304	10,304	10,304	10,304	10,304	10,304
Obs. in control group	16,853	16,853	16,853	16,853	16,853	16,853	16,853	16,853	16,853	16,853
Mean dependent variable	0.07	0.07	0.44	0.44	0.03	0.03	0.30	0.30	0.13	0.13

The dependent variables are: a dummy that equals one if the wife is the head of the household (Columns 1-2), a dummy that equals one if she is the only household member responsible for housework (column 3-4), a dummy variable that equals one if the household has domestic service or external help for housework (columns 5-6), a dummy variable that equals one if the husband helps or is in charge of most of the housework (columns 7-8) and a dummy variable that equals one if he is in charge of most of the housework (columns 9-10). The coefficient on Post*Treated is the estimated parameter β of equation 1 which is the DD estimates (OLS) of the effect of the reform on each of the outcomes. Period 2004-2006 is the pre-treatment period and period 2007-2009 is the post-treatment period. The treatment group includes all women born between 1941 and 1944, and the control group women born between 1950 and 1953. All regressions include the following control variables: cohort, year and quarter fixed effects, interactions between the last two, and a dummy that indicates whether the woman belongs to the top 1% of personal income. Other individual characteristics in the even columns are: a dummy variable that equals one if the maximum level of education attained is at least a high school diploma; a dummy variable that equals one if the woman was born abroad; regions fixed effects (29 urban areas); and differences between spouses' age and level of education attained. Data source: Argentine Continuous Permanent Household Survey (Encuesta Permanente de Hogares Continua, EPH). Robust standard errors clustered at cohort-year-quarter in parentheses. *** $p < 0.01$, ** $p < 0.05$, * $p < 0.1$.

Table 9: The effect of the reform on the labor status
Sample of married women

	All married women		Low education		High education	
	(1)	(2)	(3)	(4)	(5)	(6)
Post*treated	-0.0863*** (0.0151)	-0.0806*** (0.0145)	-0.0727*** (0.0175)	-0.0679*** (0.0175)	-0.114*** (0.0257)	-0.108*** (0.0256)
Education high (dummy)		x				
Region fixed effects		x		x		x
Couple's age difference		x		x		x
Couple's education difference		x		x		x
Born abroad		x		x		x
Observations	27,122	27,122	16,466	16,466	10,656	10,656
Obs. in treatment group	10,293	10,293	7,049	7,049	3,244	3,244
Obs. in control group	16,829	16,829	9,417	9,417	7,412	7,412
Mean dependent variable	0.37	0.37	0.33	0.33	0.44	0.44

The dependent variable is a dummy that equals one if the woman is economically “active”. This variable uses the definition proposed in the EPH which is constructed from survey variables related to labor force participation. The coefficient on Post*Treated is the estimated parameter β of equation 1 which is the DD estimates (OLS) of the effect of the reform on each of the outcomes. Results in columns 3-6 are obtained separating the samples by educational level—high and low, where low education indicates less than high than high school diploma. Period 2004-2006 is the pre-treatment period and period 2007-2009 is the post-treatment period. The treatment group includes all women born between 1941 and 1944, and the control group women born between 1950 and 1953. All regressions include the following control variables: cohort, year and quarter fixed effects, interactions between the last two, and a dummy that indicates whether the woman belongs to the top 1% of personal income. Other individual characteristics in the even columns are: a dummy variable that equals one if the maximum level of education attained is at least a high school diploma; a dummy variable that equals one if the woman was born abroad; regions fixed effects (29 urban areas); and differences between spouses' age and level of education attained. Data source: Argentine Continuous Permanent Household Survey (Encuesta Permanente de Hogares Continua, EPH). Robust standard errors clustered at cohort-year-quarter in parentheses. *** $p < 0.01$, ** $p < 0.05$, * $p < 0.1$.

Table 10: Placebo using pre-treatment data (1996-2001)

	Probability of receiving a pension				Probability of not having any personal income				Women's personal income (Dollars PPP)			
	Whole sample		Divorced & married		Whole sample		Divorced & married		Whole sample		Divorced & married	
	d+m+w+s		d+m		d+m+w+s		d+m		d+m+w+s		d+m	
	(1)	(2)	(3)	(4)	(5)	(6)	(7)	(8)	(9)	(10)	(11)	(12)
Post*Treated	0.0394*** (0.0125)	0.0395*** (0.0126)	0.0193 (0.0136)	0.0196 (0.0136)	-0.0183 (0.0131)	-0.0186 (0.0132)	-0.00174 (0.0165)	-0.00218 (0.0163)	-6.972 (6.831)	-6.660 (6.769)	-15.93 (10.16)	-15.51 (9.937)
Including Covariates		x		x		x		x		x		x
Obs. in treatment group	14,647	14,647	9,195	9,195	14,647	14,647	9,190	9,190	14,647	14,647	9,190	9,190
Obs. in control group	19,451	19,451	15,169	15,169	19,442	19,442	15,165	15,165	19,442	19,442	15,165	15,165
	Probability of being divorced/separated				Probability of being the head of the household							
	Whole sample		Divorced & married		Whole sample		Divorced & married					
	d+m+w+s		d+m		d+m+w+s		d+m					
	(13)	(14)	(15)	(16)	(17)	(18)	(19)	(20)				
Post*Treated	-0.00966 (0.0105)	-0.00961 (0.0104)	-0.0109 (0.0148)	-0.0108 (0.0146)	0.00297 (0.0146)	0.00305 (0.0145)	-0.00882 (0.0153)	-0.00872 (0.0152)				
Including Covariates		x		x		x		x				
Obs. in treatment group	14,647	14,647	9,195	9,195	14,647	14,647	9,195	9,195				
Obs. in control group	19,451	19,451	15,169	15,169	19,451	19,451	15,169	15,169				

The dependent variables are: a dummy that equals one when the wife receives a pension (columns 1-2), a dummy that equals one when she has no personal income (columns 3-4), the wife's monthly personal income in international 2009 PPP dollars (columns 5-6), the share of the wife's income within the household (columns 7-8) and within the couple (columns 9-10), and a dummy that equals one if the wife is the head of the household (Columns 11-12). The coefficient on Post*Treated is the estimated parameter β of equation 1 for the placebo DD estimates (OLS) specified in Section 4 (see Table 3). Period 1996-1998 is the placebo pre-treatment period and period 1999-2001 is the placebo post-treatment period. The placebo treatment group includes all women born between 1933 and 1936, and the placebo control group women born between 1942 and 1945. All regressions include the following control variables: cohort, year and quarter fixed effects, interactions between the last two, and a dummy that indicates whether the woman belongs to the top 1% of personal income. Other individual characteristics in the even columns are: a dummy variable that equals one if the maximum level of education attained is at least a high school diploma and regions fixed effects (29 urban areas). The whole sample includes all women regardless of their marital status. The sample "divorced & married" is restricted to married (m) and divorced/separated women (d), i.e. it excludes singles (s) and widows (w). Data source: Argentine Permanent Household Survey (Encuesta Permanente de Hogares Puntual, EPH). Robust standard errors clustered at cohort-year-quarter in parentheses. *** p<0.01, ** p<0.05, * p<0.1.

Table 11: Placebo using pre-treatment data (1996-2001). Married women.

	Wife receives a pension		Wife does not have personal income		Wife's personal income		Wife's share of income within couple		Wife's share of income within household		Wife is the head of household	
	(1)	(2)	(3)	(4)	(5)	(6)	(7)	(8)	(9)	(10)	(11)	(12)
Post*Treated	0.0284** (0.0142)	0.0303** (0.0141)	-0.00232 (0.0170)	-0.00498 (0.0171)	-12.99 (9.573)	-10.68 (9.703)	-0.000107 (0.0102)	-0.000341 (0.00994)	-0.0192 (0.0122)	-0.0181 (0.0120)	-0.0138** (0.00619)	-0.0138** (0.00629)
Education high (dummy)		x		x		x		x		x		x
Region fixed effects		x		x		x		x		x		x
Couple's age difference		x		x		x		x		x		x
Couple's education difference		x		x		x		x		x		x
Observations	20,677	20,677	20,677	20,677	20,677	20,677	18,220	18,220	18,913	18,913	20,685	20,685
Obs. in treatment group	7,942	7,942	7,942	7,942	7,942	7,942	7,135	7,135	7,375	7,375	7,946	7,946
Obs. in control group	12,735	12,735	12,735	12,735	12,735	12,735	11,085	11,085	11,538	11,538	12,739	12,739

The dependent variables are: a dummy that equals one when the wife receives a pension (columns 1-2), a dummy that equals one when she has no personal income (columns 3-4), the wife's monthly personal income in international 2009 PPP dollars (columns 5-6), the share of the wife's income within the household (columns 7-8) and within the couple (9-10), and a dummy that equals one if the wife is the head of the household (Columns 11-12). The coefficient on Post*Treated is the estimated parameter β of equation 1 for the placebo DD estimates (OLS) specified in Section 4 (see Table 3). Period 1996-1998 is the placebo pre-treatment period and period 1999-2001 is the placebo post-treatment period. The placebo treatment group includes all women born between 1933 and 1936, and the placebo control group women born between 1942 and 1945. All regressions include the following control variables: cohort, year and quarter fixed effects, interactions between the last two, and a dummy that indicates whether the woman belongs to the top 1% of personal income. Other individual characteristics in the even columns are: a dummy variable that equals one if the maximum level of education attained is at least a high school diploma; a dummy variable that equals one if the woman was born abroad; regions fixed effects (29 urban areas); and differences between spouses' age and level of education attained. Data source: Argentine Permanent Household Survey prior to 2003 (Encuesta Permanente de Hogares Puntual). Robust standard errors clustered at cohort-year-quarter in parentheses. *** p<0.01, ** p<0.05, * p<0.1.

Table 12: Means, by education

Variable	Low educated				High educated			
	Control cohorts		Treated cohorts		Control cohorts		Treated cohorts	
	2004-06	2007-09	2004-06	2007-09	2004-06	2007-09	2004-06	2007-09
All women								
Pension recipient	0.09	0.12	0.26	0.78	0.08	0.12	0.39	0.74
No personal income	0.41	0.39	0.45	0.13	0.31	0.28	0.30	0.09
Personal income (Argentine Pesos: AR\$)	259	534	246.64	654.81	823.73	1592.84	758.58	1476.51
Personal income (2009 PPP USD)	173	323	164.58	396.29	550.15	963.28	506.14	895.45
Divorced or separated	0.14	0.13	0.09	0.09	0.18	0.17	0.12	0.14
Head of household	0.32	0.37	0.37	0.42	0.32	0.35	0.39	0.49
Woman is the only responsible for housework	0.39	0.42	0.44	0.45	0.34	0.36	0.44	0.45
Born abroad	0.08	0.11	0.12	0.11	0.06	0.05	0.07	0.08
Live with partner	0.12	0.11	0.07	0.08	0.07	0.07	0.05	0.06
Married	0.56	0.55	0.51	0.49	0.61	0.59	0.55	0.45
Widow	0.10	0.14	0.25	0.28	0.06	0.08	0.19	0.23
Single	0.08	0.08	0.07	0.07	0.09	0.09	0.09	0.13
Active (in the labor market)	0.55	0.50	0.33	0.21	0.68	0.63	0.44	0.31
Divorced & married								
Pension recipient	0.03	0.06	0.11	0.74	0.05	0.07	0.27	0.67
No personal income	0.47	0.45	0.59	0.17	0.33	0.32	0.39	0.12
Personal income (Argentine Pesos: AR\$)	224.20	461.44	165.81	546.38	785.54	1523.24	662.36	1263.80
Personal income (2009 PPP USD)	149.96	279.77	110.81	330.47	525.01	921.34	442.51	765.28
Divorced or separated	0.18	0.17	0.13	0.13	0.21	0.21	0.16	0.21
Head of household	0.22	0.25	0.17	0.20	0.25	0.25	0.19	0.27
Woman is the only responsible for housework	0.40	0.43	0.45	0.44	0.34	0.34	0.40	0.41
Born abroad	0.08	0.12	0.12	0.12	0.06	0.06	0.07	0.09
Active (in the labor market)	0.52	0.48	0.30	0.18	0.66	0.63	0.42	0.30
Married								
Pension recipient	0.03	0.05	0.11	0.74	0.05	0.07	0.27	0.68
No personal income	0.54	0.52	0.65	0.19	0.41	0.38	0.42	0.15
Personal income (Argentine Pesos: AR\$)	190.51	406.01	141.91	510.42	687.10	1376.72	619.77	1193.79
Personal income (2009 PPP USD)	127.32	245.94	94.73	308.98	459.56	833.43	413.78	721.48
Wife's share of income within household	0.18	0.17	0.15	0.26	0.25	0.26	0.26	0.32
Wife's share of income within couple	0.23	0.23	0.19	0.33	0.29	0.31	0.30	0.35
Head of household	0.08	0.12	0.07	0.12	0.07	0.10	0.06	0.10
Wife is the only responsible for housework	0.40	0.44	0.46	0.43	0.34	0.35	0.40	0.38
Husband does some housework	0.22	0.26	0.28	0.35	0.27	0.28	0.33	0.35
Husband responsible for housework	0.09	0.13	0.12	0.17	0.12	0.17	0.14	0.20
Have domestic service or external help	0.01	0.01	0.01	0.02	0.09	0.10	0.08	0.07
Born abroad	0.08	0.11	0.12	0.11	0.07	0.06	0.07	0.08
Couple's age difference	2.63	2.28	2.46	2.56	2.67	2.78	2.57	2.35
Couple's education difference	-0.31	-0.33	-0.44	-0.43	0.51	0.53	0.43	0.44
Active (in the labor market)	0.46	0.43	0.26	0.15	0.60	0.58	0.38	0.25
Observations	7,684	7,309	6,572	6,527	5,787	6,050	2,965	3,153

Table 13: The effect of the reform on income
By education

	Woman receives		Woman does not		Woman's income		Married Women				
	a pension		have income		(PPP Dollars)		Wife receives	Wife does not	Wife's	Wife's share of income	Wife's share of income
	d+m+w+s	d+m	d+m+w+s	d+m	d+m+w+s	d+m	a pension	have income	income	within household	within couple
	(1)	(2)	(3)	(4)	(5)	(6)	(7)	(8)	(9)	(10)	(11)
Education: Low											
Post*treated	0.496***	0.610***	-0.302***	-0.412***	82.87***	92.04***	0.616***	-0.450***	101.9***	0.125***	0.149***
	(0.0161)	(0.0192)	(0.0161)	(0.0217)	(9.833)	(11.71)	(0.0195)	(0.0232)	(12.30)	(0.0107)	(0.0129)
Education: High											
Post*treated	0.305***	0.375***	-0.194***	-0.260***	75.57***	52.12*	0.391***	-0.266***	47.09	0.0583***	0.0459***
	(0.0160)	(0.0226)	(0.0154)	(0.0188)	(28.77)	(29.01)	(0.0239)	(0.0231)	(35.94)	(0.0133)	(0.0147)
Couple's age difference							x	x	x	x	x
Couple's education difference							x	x	x	x	x
Observations	46,047	34,039	46,047	34,039	46,047	34,039	27,157	27,157	27,157	26,954	26,544
Obs. in treatment group	19,217	12,554	19,217	12,554	19,217	12,554	10,304	10,304	10,304	10,304	10,304
Obs. in control group	26,830	21,485	26,830	21,485	26,830	21,485	16,853	16,853	16,853	16,853	16,853
Mean dep. var. (Low Edu)	0.26	0.11	0.45	0.59	164.6	110.81	0.11	0.65	94.73	0.15	0.19
Mean dep. var. (High Edu)	0.39	0.27	0.3	0.39	506.1	442.51	0.27	0.42	413.78	0.26	0.30

The dependent variables are: a dummy that equals one when the woman receives a pension (columns 1-2 and 7), a dummy that equals one when she has no personal income (columns 3-4 and 8), and the woman's monthly personal income in dollars (PPP 2009) (columns 5-6 and 9). For the subsample of married women additional dependent variables are the share of the wife's income within the household (column 10) and within the couple (column 11). The coefficient on Post*Treated is the estimated parameter β of equation 1 which is the DD estimates (OLS) of the effect of the reform on each of the outcomes, separating the samples by educational level—high and low, where low education indicates less than high school diploma. Period 2004-2006 is the pre-treatment period and period 2007-2009 is the post-treatment period. The treatment group includes all women born between 1941 and 1944, and the control group women born between 1950 and 1953. All regressions include the following control variables: cohort, year and quarter fixed effects, interactions between the last two, and a dummy that indicates whether the woman belongs to the top 1% of personal income. Other individual characteristics in the even columns are a dummy variable that equals one if the woman was born abroad; regions fixed effects (29 urban areas). The whole sample includes all women regardless of their marital status. The sample of divorced (d) and married (m) is restricted to married and divorced/separated women, i.e. it excludes singles (s) and widows (w). Data source: Argentine Continuous Permanent Household Survey (Encuesta Permanente de Hogares Continua, EPH). Robust standard errors clustered at cohort-year-quarter in parentheses. *** p<0.01, ** p<0.05, * p<0.1.

Table 14: Effects of the reform on the probability of being divorced/separated and the bargaining power of women
By education

	Women is		Women is the		Woman is the only		Married women				
	divorced/separated		head of the household		responsible for housework		Wife is head	Wife only responsible	Domestic service	Husband does	Husband does
	d+m+w+s	d+m	d+m+w+s	d+m	d+m+w+s	d+m	of household	for housework	or external help	some or most housework	most housework
	(1)	(2)	(3)	(4)	(5)	(6)	(7)	(8)	(9)	(10)	(11)
Education: Low											
Post*treated	0.0114 (0.0101)	0.0113 (0.0138)	0.00303 (0.0144)	0.00543 (0.0139)	-0.0188 (0.0162)	-0.0443** (0.0173)	0.0144 (0.0107)	-0.0612*** (0.0186)	0.0073 (0.0042)	0.0306 (0.0194)	0.0172 (0.0141)
Education: High											
Post*treated	0.0312** (0.0142)	0.0563*** (0.0196)	0.0731*** (0.0202)	0.0834*** (0.0220)	-0.00516 (0.0190)	0.00495 (0.0224)	0.0168 (0.0131)	-0.0388 (0.0236)	0.0043 (0.0124)	0.0079 (0.0269)	0.0236 (0.0205)
Observations	46,047	34,039	46,047	34,039	46,047	34,039	10,304	10,304	10,304	10,304	10,304
Obs. in treatment group	19,217	12,554	19,217	12,554	19,217	12,554	16,853	16,853	16,853	16,853	16,853
Obs in control group	26,830	21,485	26,830	21,485	26,830	21,485	27,157	27,157	27,157	27,157	27,157
Mean dep. var. (Low Edu)	0.09	0.13	0.37	0.17	0.44	0.45	0.07	0.46	0.01	0.28	0.12
Mean dep. var. (High Edu)	0.12	0.16	0.39	0.19	0.44	0.4	0.06	0.4	0.08	0.33	0.14

The dependent variables are: a dummy that equals one when the woman is divorced or separated (columns 1-2), a dummy that equals one when she is the head of the household (columns 3-4 and 7), and if she is the only household member responsible for housework (columns 5-6 and 8). For the subsample of married women additional dependent variables are a dummy variable that equals one if the household has domestic service or external help for housework (column 9), a dummy variable that equals one if the husband helps or is in charge of the housework (column 10) and a dummy variable that equals one if he is in charge of most of the housework (column 11). The coefficient on Post*Treated is the estimated parameter β of equation 1 which is the DD estimates (OLS) of the effect of the reform on each of the outcomes, separating the samples by educational level—high and low, where low education indicates less than high school diploma. Period 2004-2006 is the pre-treatment period and period 2007-2009 is the post-treatment period. The treatment group includes all women born between 1941 and 1944, and the control group women born between 1950 and 1953. All regressions include the following control variables: cohort, year and quarter fixed effects, interactions between the last two, a dummy that indicates whether the woman belongs to the top 1% of personal income, a dummy variable that equals one if the woman was born abroad; and regions fixed effects (29 urban areas). The whole sample includes all women regardless of their marital status. The sample of divorced (d) and married (m) is restricted to married and divorced/separated women, i.e. it excludes singles (s) and widows (w). Data source: Argentine Continuous Permanent Household Survey (Encuesta Permanente de Hogares Continua, EPH). Robust standard errors clustered at cohort-year-quarter in parentheses. *** $p < 0.01$, ** $p < 0.05$, * $p < 0.1$.

Table 15: Panel data fixed effects estimates
Sample of married women

	Pension receipt	No personal Income	Personal Income (USD PPP)	Share of Income Within Couple	Share of Income Within Household	Prob. Active	Wife only Responsible for Housework	Domestic service or external help	Husband does some housework
	(1)	(2)	(3)	(4)	(5)	(6)	(7)	(8)	(9)
Post*treated	0.302*** (0.0202)	-0.242*** (0.0215)	40.02*** (12.04)	0.0804*** (0.0093)	0.0628*** (0.0089)	-0.0209* (0.0118)	0.0006 (0.0151)	-0.0014 (0.0059)	0.0122 (0.0173)
Education: Low									
Post*treated	0.375*** (0.0256)	-0.312*** (0.0279)	72.24*** (11.31)	0.104*** (0.0120)	0.0791*** (0.0107)	-0.0278* (0.0160)	-0.0162 (0.0207)	0.0067 (0.0050)	0.0180 (0.0201)
Education: High									
Post*treated	0.152*** (0.0250)	-0.103*** (0.0233)	-10.94 (23.72)	0.0295** (0.0122)	0.0280** (0.0120)	-0.0118 (0.0146)	0.0294 (0.0270)	-0.0110 (0.0146)	-0.0021 (0.0315)
Observations	7,481	7,481	7,481	7,197	7,352	7,476	7,481	7,481	7,364
Individuals	2,364	2,364	2,364	2,322	2,338	2,364	2,364	2,364	2,336
Obs. in treatment group	2728	2728	2728	2728	2728	2728	2728	2728	2728
Obs. in control group	4753	4753	4753	4753	4753	4753	4753	4753	4753

The dependent variables are: a dummy that equals one when the wife receives a pension (column 1), a dummy that equals one when she has no personal income (column 2), wife's monthly personal income in USD 2009 PPP dollars (column 3), the share of wife's income within the household (column 4) and within the couple (column 5), a dummy that equals one if the wife is economically active (column 6), a dummy that equals one if she is the only household member responsible for housework (column 7), a dummy variable that equals one if the household has domestic service or external help for housework (columns 8), and a dummy variable that equals one if the husband helps or is in charge of most of the housework (columns 9). The coefficient on Post*Treated is the estimated parameter β of equation 1 —with an additional unobserved time-invariant individual effect— which is the DD estimates of the effect of the reform on each of the outcomes. Period 2005-IV-2006-IV is the pre-treatment period and period 2007-I-2008-I is the post-treatment period. The treatment group includes all women born between 1941 and 1945, and the control group women born between 1948 and 1953. All regressions include the following control variables: year and quarter fixed effects, interactions between the last two, and a dummy that indicates whether the woman belongs to the top 1% of personal income. Data source: Argentine Continuous Permanent Household Survey (Encuesta Permanente de Hogares Continua, EPH). Robust standard errors clustered at cohort-year-quarter in parentheses. *** p<0.01, ** p<0.05, * p<0.1.

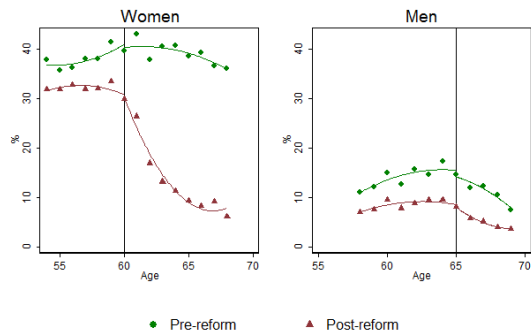
Table 16: Placebo panel data fixed effects estimates

Sample of married women

	Pension receipt	No personal Income	Personal Income (USD PPP)	Share of Income Within Couple	Share of Income Within Household	Prob. active	Wife only Responsible for Housework	Domestic service or external help	Husband does some housework
	(1)	(2)	(3)	(4)	(5)	(6)	(7)	(8)	(9)
Post*treated	0.00225 (0.00610)	0.00734 (0.0108)	-26.64*** (8.311)	-0.00875 (0.00803)	-0.00420 (0.00743)	-0.0202* (0.0110)	0.00873 (0.0198)	0.00817 (0.00686)	0.00119 (0.0176)
Education: Low									
Post*treated	-0.000485 (0.00801)	-0.00208 (0.0157)	-10.74 (7.438)	-0.00583 (0.00985)	-0.00478 (0.00908)	-0.00712 (0.0143)	-0.0157 (0.0227)	0.00334 (0.00537)	0.00393 (0.0213)
Education: High									
Post*treated	0.0118 (0.0111)	0.0233 (0.0169)	-54.61*** (18.68)	-0.0124 (0.0135)	-0.00205 (0.0124)	-0.0475** (0.0192)	0.0582 (0.0374)	0.0147 (0.0173)	-0.00208 (0.0323)
Observations	8,160	8,160	8,160	7,630	7,908	8,155	8,160	8,160	7,988
Individuals	2,534	2,534	2,534	2,460	2,493	2,534	2,534	2,534	2,493
Obs. in treatment group	2946	2946	2946	2946	2946	2946	2946	2946	2946
Obs. in control group	5214	5214	5214	5214	5214	5214	5214	5214	5214

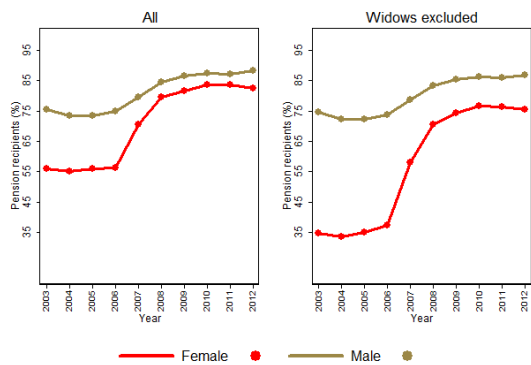
The dependent variables are: a dummy that equals one when the wife receives a pension (column 1), a dummy that equals one when she has no personal income (column 2), wife's monthly personal income in USD 2009 PPP dollars (column 3), the share of wife's income within the household (column 4) and within the couple (column 5), a dummy that equals one if the wife is economically active (column 6), a dummy that equals one if she is the only household member responsible for housework (column 7), a dummy variable that equals one if the household has domestic service or external help for housework (columns 8), and a dummy variable that equals one if the husband helps or is in charge of most of the housework (columns 9). The coefficient on Post*Treated is the estimated parameter β of equation 1 —with an additional unobserved time-invariant individual effect— for the placebo DD estimate on each of the outcomes. Period 2003-IV-2004-IV is the placebo pre-treatment period and period 2005-I-2006-I is the placebo post-treatment period. The placebo treatment group includes all women born between 1939 and 1943, and the control group women born between 1946 and 1951. All regressions include the following control variables: year and quarter fixed effects, interactions between the last two, and a dummy that indicates whether the woman belongs to the top 1% of personal income. Data source: Argentine Continuous Permanent Household Survey (Encuesta Permanente de Hogares Continua, EPH). Robust standard errors clustered at cohort-year-quarter in parentheses. *** p<0.01, ** p<0.05, * p<0.1.

Figure 1: Percentage of individuals with personal income = 0



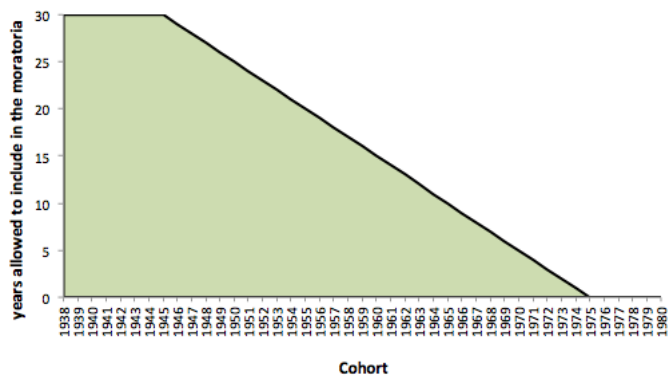
Source: Argentine Continuous Permanent Household Survey (EPH)

Figure 2: Pension recipients (as % of age-eligible individuals)



Source: Argentine Continuous Permanent Household Survey (EPH)

Figure 3: Maximum number of years each cohort of women can include in the payment schedule of the moratoria at retirement age



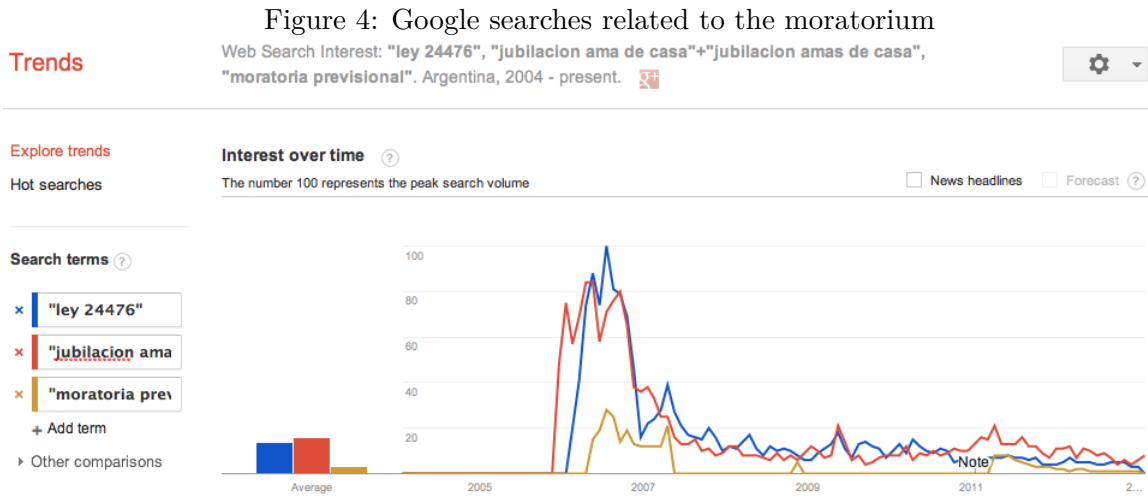
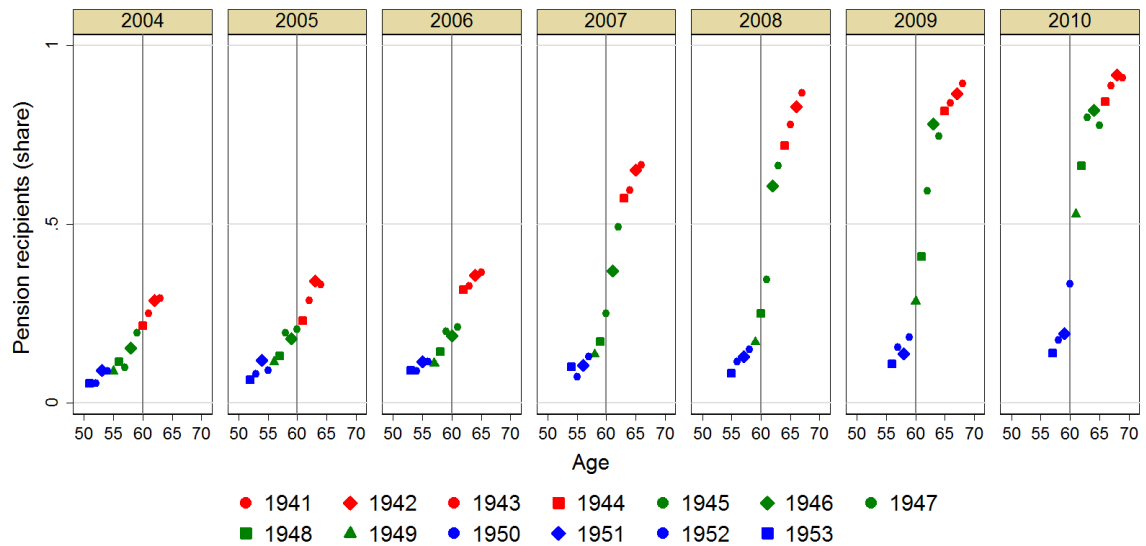


Figure 5: Evolution of the proportion of pension recipients by cohort



Source: Argentine Continuous Permanent Household Survey (EPH)

Figure 6: Evolution of the percentage of pension recipients

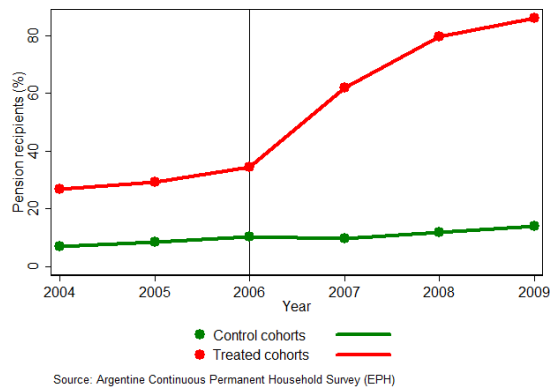


Figure 7: Women without personal income

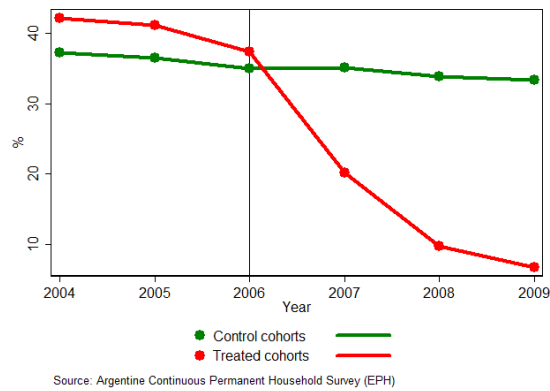
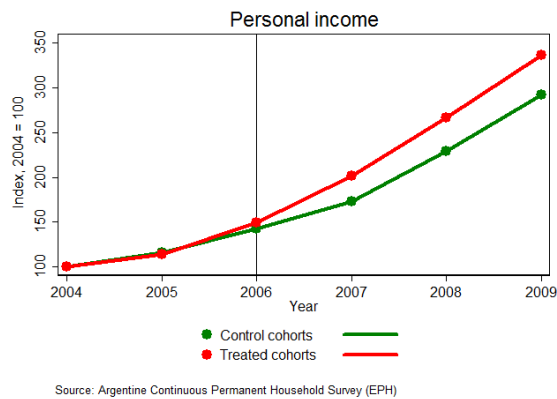


Figure 8: Evolution of monthly nominal personal income



Note: Nominal income. Annual inflation rate around 25% after 2007.

Figure 9:
Women is divorced/separated

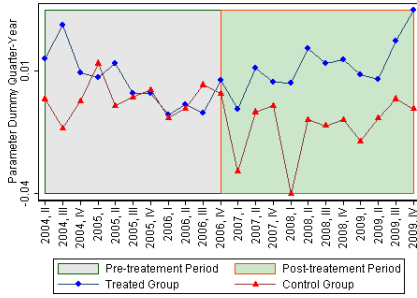


Figure 10:
Women is the head of household

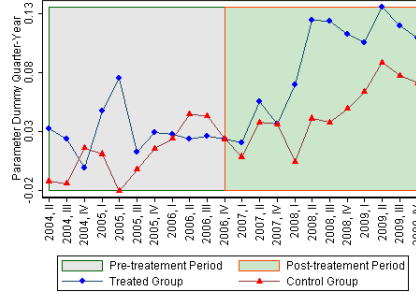


Figure 11:
Women is the only responsible for housework

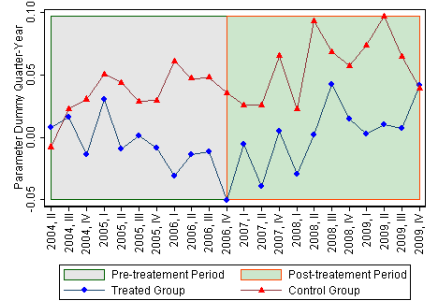


Figure 12:
Women is the head of the household
Sample of married women

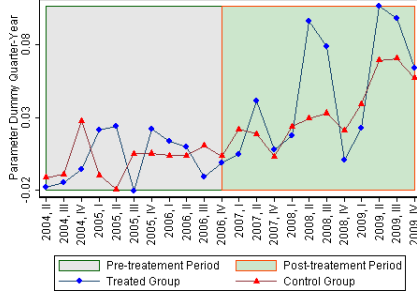
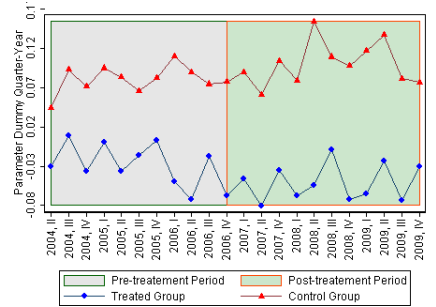


Figure 13:
Women is the only responsible for housework
Sample of married women

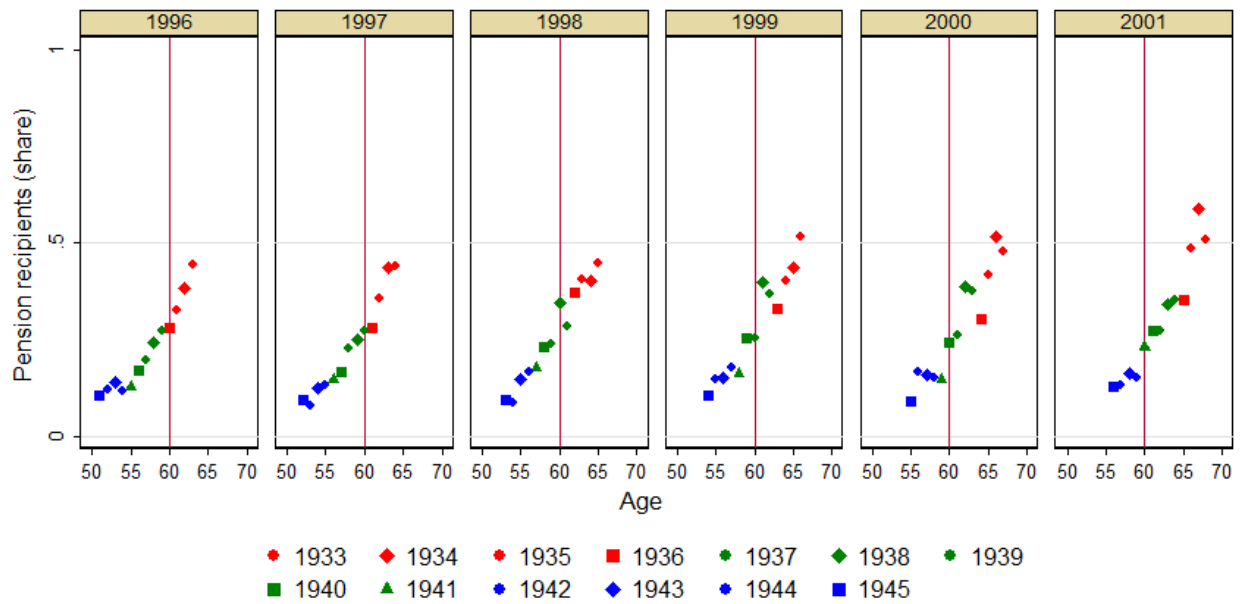


In these figures we plot the estimated parameters $\delta_{t,g}^T$ of the following equation, which was run separately for individuals in the control and in the treated group,

$$y_{i,g,t} = \alpha_g + \delta_{t,g}^T + \delta_{i,g}^C + X_i' \gamma_g + \varepsilon_{i,t} \quad , \quad g = \{\text{treated, control}\}$$

where $y_{i,g,t}$ is the outcome of interest for individual i , of group g (control or treated), in period t ; $\delta_{t,g}^T$ are quarter-year fixed effects; $\delta_{i,g}^C$ are cohort fixed effects; $X_{i,g}$ is a vector of individual characteristics (education, born abroad and region fixed effects); and $\varepsilon_{i,t}$ is a residual.

Figure 14: Placebo: Evolution of the proportion of pension recipients by cohort



Source: Argentine Permanent Household Survey (EPH Puntual)